

# PARTS LIST & INSTRUCTION

# *DVK* SERIES

## Industrial Sewing Machines

*DVK1702B*  
*DVK1702P,PMD*  
*B2000C(DVK1702BK)*  
*B2000PC(DVK1702PBK)*  
*DVK1702MLH*

2015年2月 第12版 発行

12<sup>th</sup> edition : February 2015

No. 150017

**KANSAI**  
SPECIAL®

## パーツブック御利用に際して

- このパーツブックは、2015年2月製造中のDVKシリーズのデータに基づいて作成されたものです。
- 各機構別に収録され、左側のページに分解イラスト図、右側のページに部品番号、名称、及び数量が記載されています。
- この本の最後に部品番号インデックスを記載しています。部品番号からの図解、名称の検索に御利用下さい。
- 部品は、予告なく変更される場合がありますので、あらかじめ御了承下さい。

## INTRODUCTION

- This parts book is based on data current FEBRUARY 2015.
- Each mechanism is arranged on facing pages. You will find listed for parts number, names, and quantities.
- A parts number index is attached to the back of this book for convenience.
- Parts are subject to change without notice.

## DVKシリーズ 表示方法

## DVK SERIES INFORMATION

- DVKは片面飾り縫いです。

DVK is bottom coverstitch.

- 針幅です。(インチ)

Needle width (inch)

D	V	K	1	7	0	2	B	-	1	/	4
---	---	---	---	---	---	---	---	---	---	---	---

- 01~02は針数を表します。

01~02 is needle number.

- Bはベルトループ用です。

B is for belt loop.

BKは前メス装置付です。

BK is for belt loop with front cutter.

Pは後プーラー装置付です。

P is with rear puller.

PMDは前プーラー装置付です。

PMD is with front puller.

MLHはピンタック縫いです。

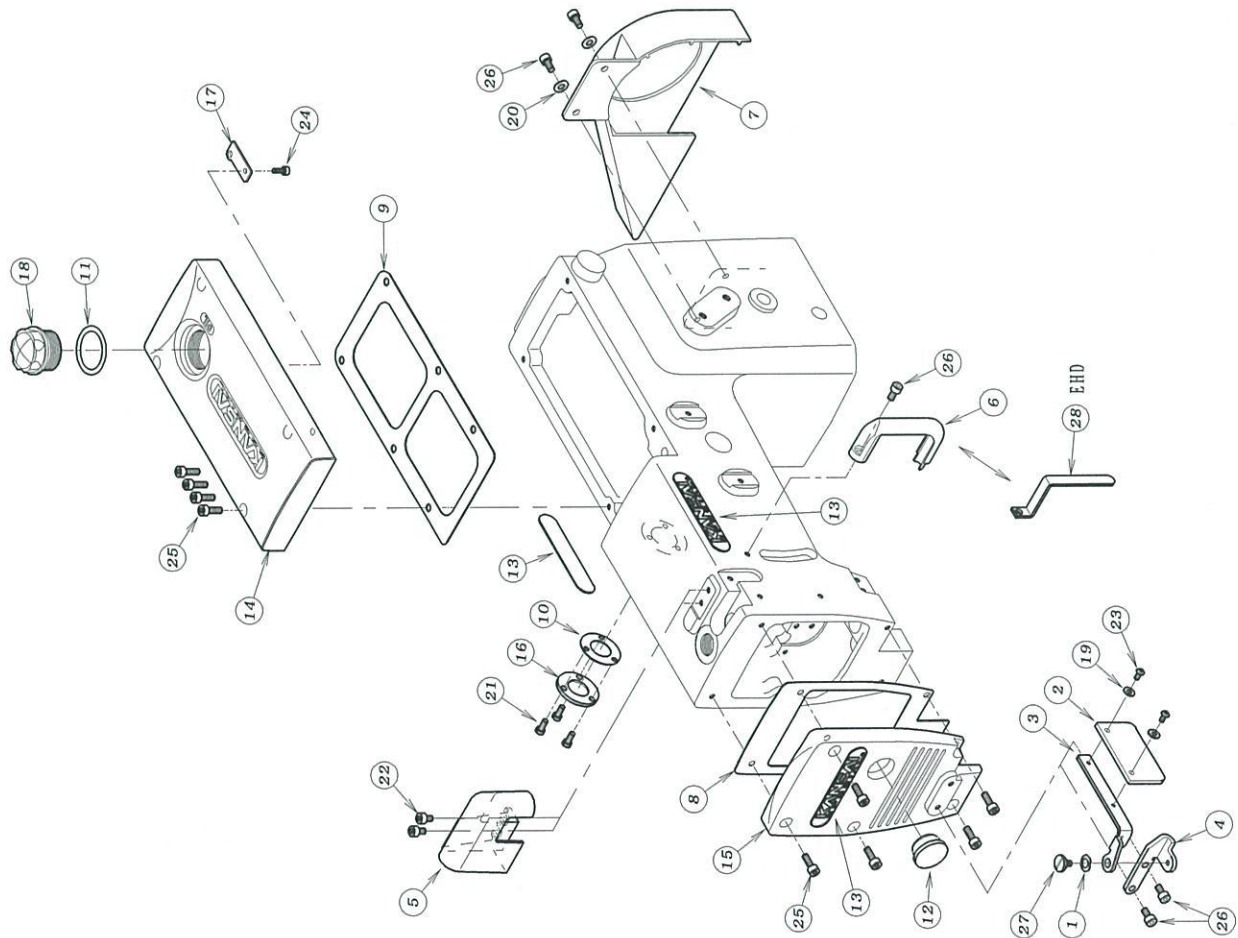
MLH for PIN-TUCKING operation.

# 目次 CONTENTS

1. フレーム関係 (1)	FRAME ASSEMBLY (1)	1
2. フレーム関係 (2)	FRAME ASSEMBLY (2)	2
3. 糸調子機構	THREAD TENSION MECHANISM	3
4. ブッシュ機構	BUSHING	4
5. 針棒, 弓機構	NEEDLE BAR&LEVER MECHANISM	5
6. 下軸機構	CRANKSHAFT MECHANISM	6
7. 送り機構	FEED MECHANISM	7
8. ルーパー機構	LOOPER MECHANISM	8
9. 押え上げ機構	PRESSER FOOT MECHANISM	9
10. 給油機構	LUBRICATION MECHANISM	10
11. 後プラー機構 (P, PMD)	REAR PULLER MECHANISM (P, PMD)	11
12. 後プラー機構 (P, PMD)	REAR PULLER MECHANISM (P, PMD)	12
13. 前プラー機構	METERING DEVICE MECHANISM	13
14. BK専用部品 (1)	MODEL BK EXCLUSIVE PARTS	14
15. BK専用部品 (2)	MODEL BK EXCLUSIVE PARTS	15
16. 糸立て及びテーブル	THREAD STAND AND TABLE	16
17. アクセサリー	ACCESSORIES	17
18. ゲージパーツ	GAUGE PARTS	18
19. ゲージパーツ	GAUGE PARTS	19
20. 押え揚げ装置 (エア-式) FL-3	FOOT LIFTER MECHANISM (PNEUMATIC TYPE) FL-3	20
21. 押え揚げ装置 (エア-式) FL-6	FOOT LIFTER MECHANISM (PNEUMATIC TYPE) FL-6	21
22. ゲージ部品一覧	GAUGE TABLE	22

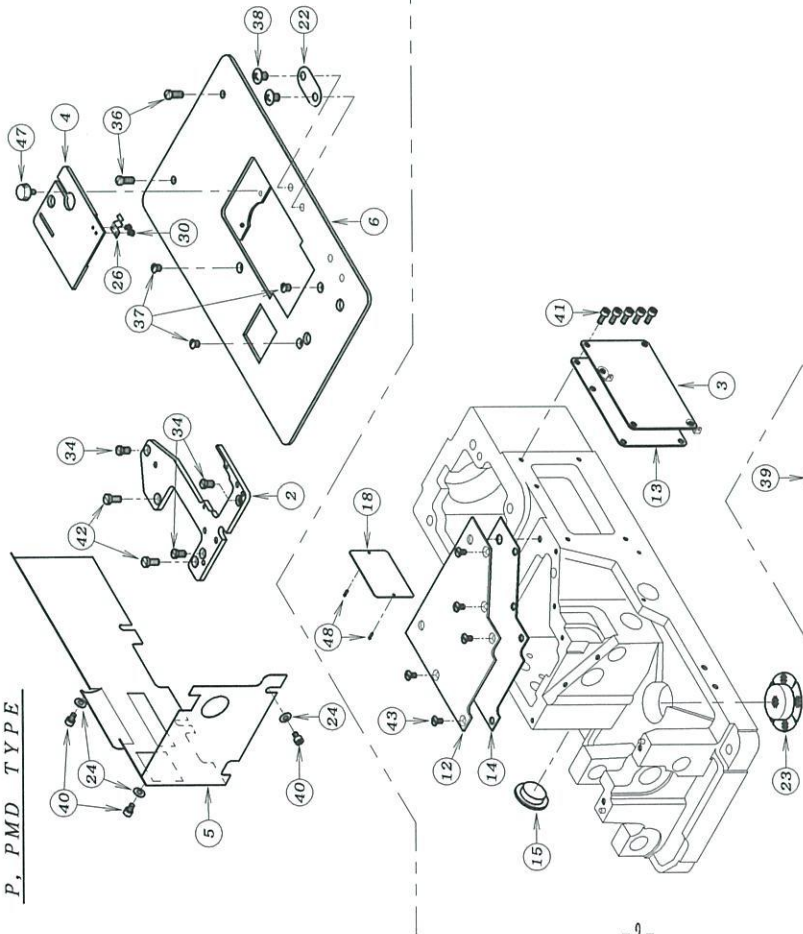
# 1. フレーム関係 (1) FRAME ASSEMBLY (1)

REF. NO.	PART NO.	品名	DESCRIPTION	QTY
01-0102-119		波座金	WASHER	1
01-0221-273		保護カバー	EYE GUARD	1
01-0321-275		保護カバー-取り付板	BRACKET	1
01-0421-276		保護カバー-ブラケット	BRACKET	1
01-0521-934		針糸道カバー	COVER	1
01-0621-935		弓糸道カバー	COVER	1
01-0721-972		フ-リーカバー	PULLEY COVER	1
01-0823-157		パッキン	GASKET	1
01-0923-206		パッキン F	GASKET	1
01-1023-263		パッキン C	GASKET C	1
01-1123-285		O-リング	O RING	1
01-1223-427		コ-ム栓	PLUG	1
01-1324-052		銘板	BRAND NAME PLATE	3
01-1427-017		立ロットカバー	TOP COVER	1
01-1527-018		面版	HEAD COVER	1
01-1639-108		油止め板 B	COVER	1
01-1739-137		パイプサポート	PIPE SUPPORT	1
01-1839-234		オイルポット	OIL POT	1
01-2075-455		ワッシャー	WASHER	2
01-2187-010		ネジ	SCREW	2
01-2287-092		六角穴付きボルト	BOLT	3
01-2387-099		ネジ	SCREW	2
01-2487-124		六角穴付きボルト	BOLT	1
01-2587-129		六角穴付きボルト	BOLT	9
01-2687-177		六角穴付きボルト	BOLT	5
01-2787-264		段ネジ	SCREW	1
01-2821-712		弓糸道保護カバー	SAFETY PLATE	1

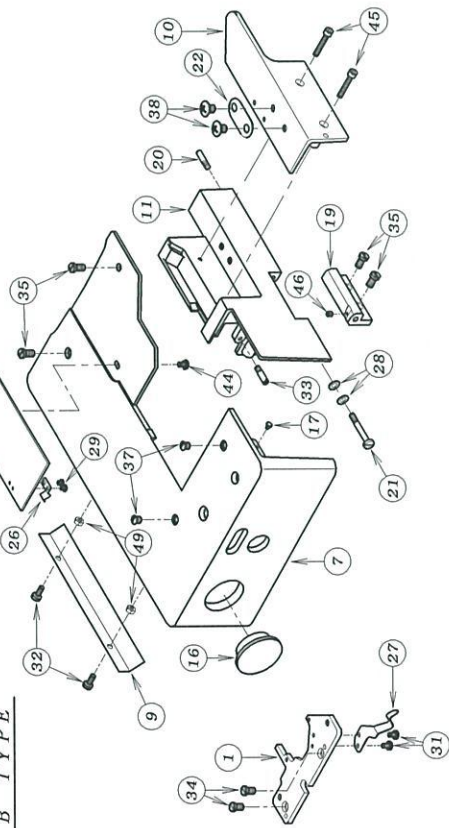


## 2. フレーム関係 (2) FRAME ASSEMBLY (2)

P, PMD TYPE

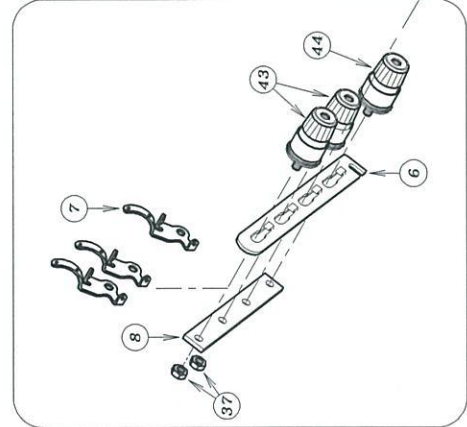
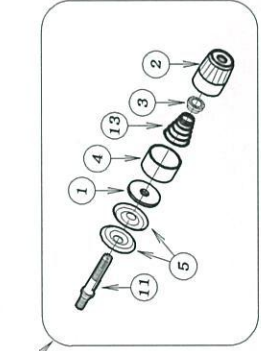
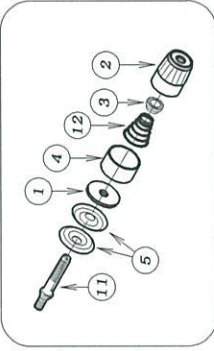
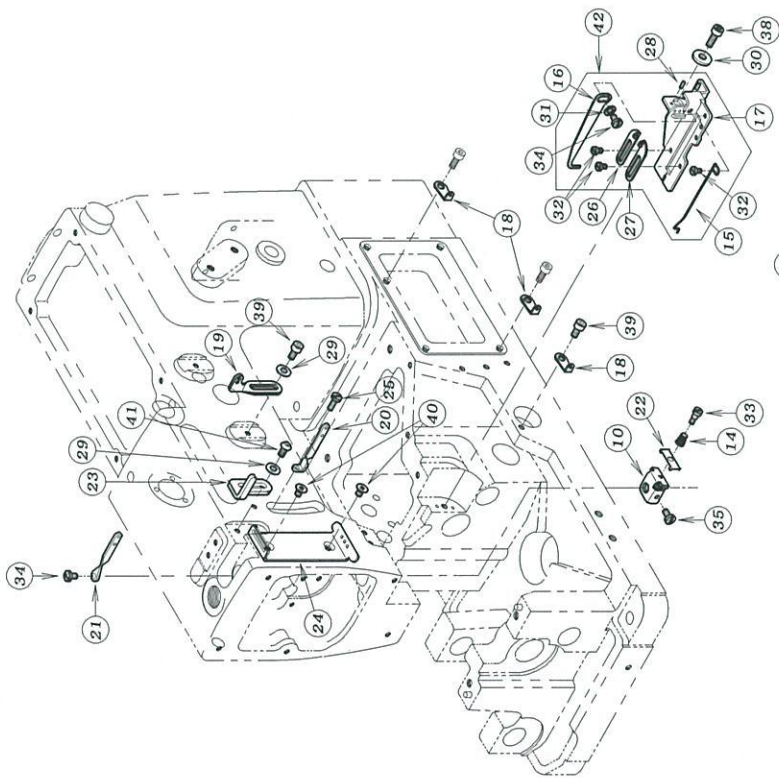


B TYPE



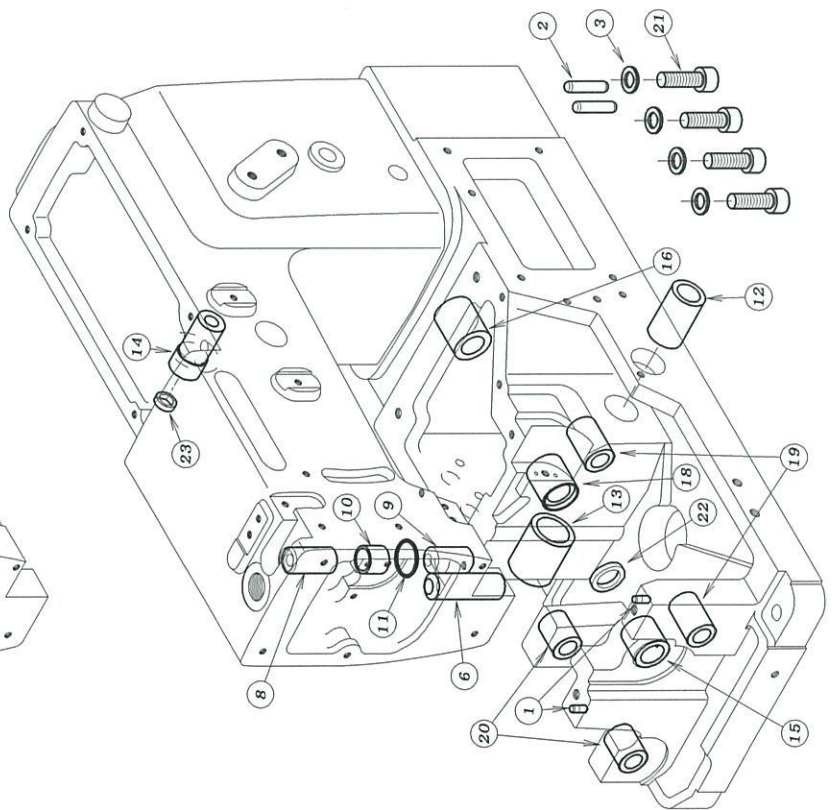
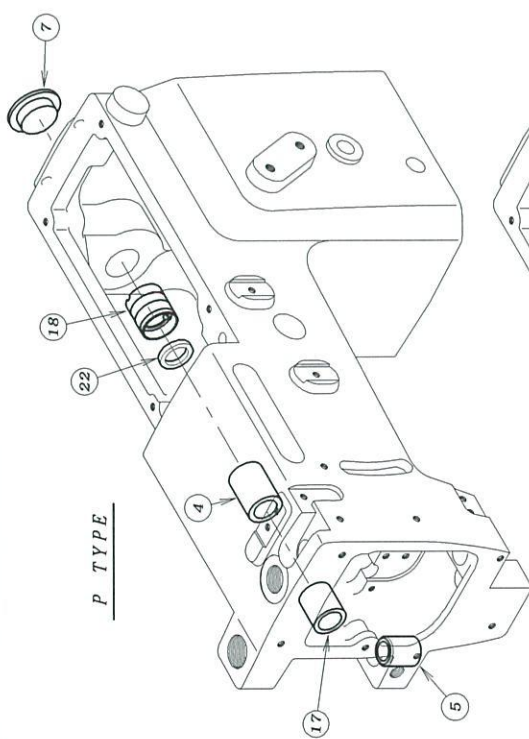
REF. NO.	PART NO.	品名	DESCRIPTION	QTY
02-01	14-030	針板土台	NEEDLE PLATE SUPPORT BRACKET	1
02-02	14-160	針板土台	NEEDLE SUPPORT BRACKET	1
02-03	21-137	前油カバー	FRONT COVER	1
02-04	21-227	差板	SLIDE COVER	1
02-05	21-366	楯板カバー - B	COVER B	1
02-06	21-395	上ベ - スカバー	UPPER COVER	1
02-07	21-781	上ベ - スカバー	UPPER COVER	1
02-08	21-782	前ベ - スカバー	FRONT BASE COVER	1
02-09	21-783	上ベ - ス補助カバー	COVER	1
02-10	21-784	定規板	FRONT COVER PLATE	1
02-11	21-785	前カバー	FRONT COVER	1
02-12	21-897	上油カバー	COVER	1
02-13	23-137	ハ - ッキン	GASKET	1
02-14	23-229	上油カバー - ハ - ッキン	GASKET	1
02-15	23-296	コ - ム栓	PLUG	1
02-16	23-504	コ - ム栓	PLUG	1
02-17	23-512	クッションゴム	CUSHION RUBBER	1
02-18	24-053	モ - ルステッカー	TYPE PLATE	1
02-19	25-226	前カバー - ヒンジ	HINGE	1
02-20	25-503	カバー - ヒンジ	SCREW	1
02-21	25-517	ヒンジ	SCREW	1
02-22	26-712	取付金具	WASHER	2
02-23	31-438	ベ - ットフィルター	FILTER	1
02-24	75-455	ワッシャ	WASHER	3
02-25	75-528	波塵金	WASHER	1
02-26	79-801	ハ - ネ	SPRING	1
02-27	79-802	前カバー - 止めハ - ネ	SPRING	1
02-28	79-922	皿ハ - ネ	SPRING	2
02-29	84-117	ネジ	SCREW	2
02-30	84-163	ネジ	SCREW	2
02-31	84-361	ネジ	SCREW	2
02-32	87-209	ネジ	SCREW	2
02-33	84-706	段ネジ	SCREW	1
02-34	84-761	ネジ	SCREW	2~3
02-35	84-762	ネジ	SCREW	4
02-36	84-763	ネジ	SCREW	2
02-37	84-862	ネジ	SCREW	2~3
02-38	85-181	ネジ	SCREW	4
02-39	86-266	ナット	NUT	1
02-40	87-092	ネジ	SCREW	3
02-41	87-113	六角穴付きボルト	BOLT	5
02-42	87-278	ネジ	SCREW	2
02-43	05-061	ネジ	SCREW	5
02-44	87-266	ネジ	SCREW	1
02-45	87-285	六角穴付きボルト	BOLT	2
02-46	87-286	ネジ	SCREW	1
02-47	87-292	調節ネジ	SCREW	1
02-48	93-701	ピ - ン	PIN	2
02-49	88-146	ナット	NUT	2

### 3. 糸調子機構 (1702) THREAD TENSION MECHANISM



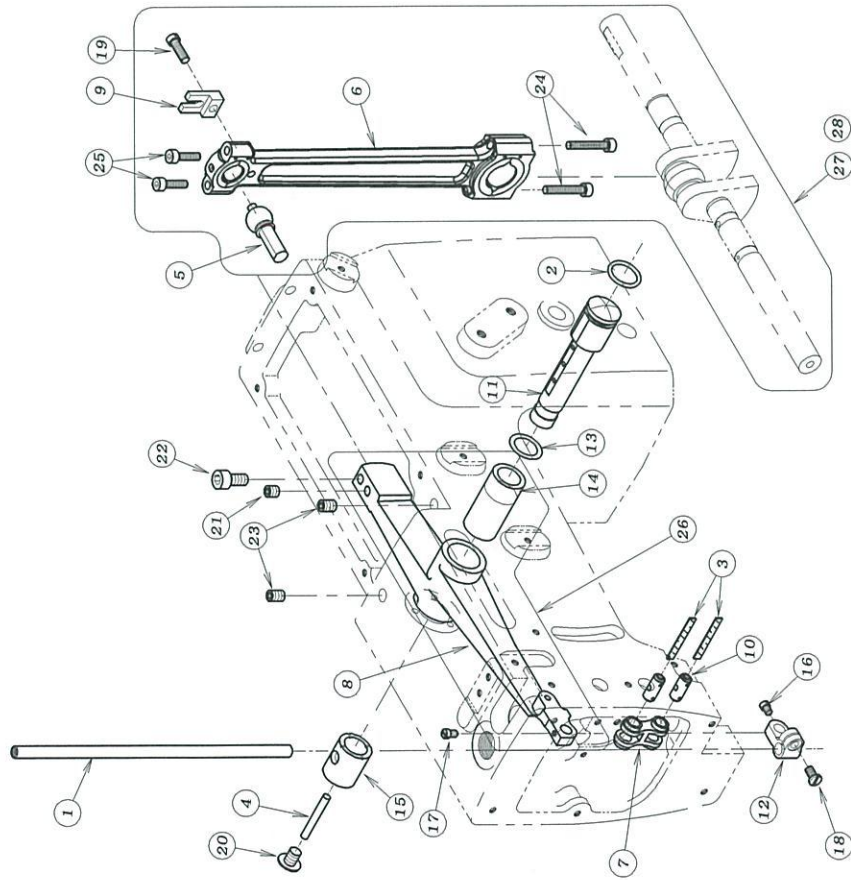
REF. NO.	PART NO.	品名	DESCRIPTION	Q'TY
03-01	23-324	フェルト	FELT	3
03-02	41-101	チャンポン皿小ケース	THREAD TENSION NUT	3
03-03	41-105	チャンポン皿ワザセット	SPRING POST	3
03-04	41-107	大ケース	SPRING CUP	3
03-05	41-509	チャンボ°ン皿	TENSION DISC	6
03-06	41-113	チャンボ°ン皿調子板	TENSION POST SUPPORT	1
03-07	41-120	チャンボ°ン皿糸道	THREAD EYELET	3
03-08	41-121	チャンボ°ン調節元板	TENSION POST HOLDER	1
03-09	41-132	カラー B	COLLAR	1
03-10	41-312	針棒糸道台	BRACKET	1
03-11	41-510	調子棒	SCREW STUD	3
03-12	41-701	チャンポン調子ハネ(強)	SPRING (HEAVY)	2
03-13	41-702	チャンポン調子ハネ(弱)	SPRING (LIGHT)	1
03-14	41-721	ハネ	SPRING	1
03-15	43-335	下糸調きヒソ	LOOPER THREAD RETAINER WIRE	1
03-16	43-344	下糸調き(上)	THREAD GUIDE	1
03-17	43-346	下糸サバキ板	BRACKET	1
03-18	43-519	糸道	THREAD EYELET	3
03-19	45-101	糸道	THREAD EYELET	1
03-20	45-121	糸道	THREAD EYELET	1
03-21	45-131	糸道	THREAD EYELET	1
03-22	45-142	糸道	THREAD EYELET	1
03-23	45-429	上糸受け	THREAD TAKE-UP PLATE	1
03-24	45-441	上糸ガイド	THREAD EYELET	1
03-25	84-363	ネジ	SCREW	1
03-26	47-131	糸道(左)	THREAD EYELET	1
03-27	47-132	糸道(右)	THREAD EYELET	1
03-28	71-191	ヒソ	PIN	2
03-29	75-455	ワッシャ	WASHER	2
03-30	75-456	ワッシャ	WASHER	1
03-31	75-468	ワッシャ	WASHER	1
03-32	84-161	ネジ	SCREW	3
03-33	84-171	鉄ネジ	SCREW	1
03-34	84-361	ネジ	SCREW	2
03-35	84-374	ネジ	SCREW	1
03-36	84-764	ネジ	SCREW	1
03-37	86-411	ナット	NUT	2
03-38	87-129	六角穴付きボルト	BOLT	1
03-39	87-177	六角穴付きボルト	BOLT	2
03-40	87-293	ネジ	SCREW	2
03-41	87-272	ネジ	SCREW	1
03-42	40-3810	下糸調きセット	LOOPER THREAD EYELET ASS'Y	1
03-43	40-7370	チャンボ°ン強セット	TENSION ASS'Y (HEAVY)	2
03-44	40-7380	チャンボ°ン弱セット	TENSION ASS'Y (LIGHT)	1

# 4. ブッシュ機構 BUSHING



REF. NO.	PART NO.	品名	DESCRIPTION	Q'TY
04-01171-255	ノックピン	PIN		2
04-0271-256	ノックピン	PIN		2
04-0375-436	ワッシャ	WASHER		4
04-0481-109	ブッシュ	BUSHING		1
04-0581-133	ブッシュ	BUSHING		1
04-0681-153	ブッシュ	BUSHING		1
04-0723-296	コナ栓	PLUG		1
04-0881-183	針棒ブッシュ上	BUSHING		1
04-0981-184	針棒ブッシュ下	BUSHING		1
04-1039-002	オイルガード	OIL GUARD		1
04-1153-169	結實バンド	BAND		1
04-1281-236	ブッシュ	BUSHING		1
04-1381-237	ブッシュ	BUSHING		1
04-1481-256	ブッシュ	BUSHING		1
04-1581-723	下シャフトブッシュ(前)	BUSHING		1
04-1681-717	下シャフトブッシュ(後)	BUSHING		1
04-1781-718	上シャフトブッシュ	BUSHING		1
04-1881-724	ブッシュ	BUSHING		2
04-1981-735	ブッシュ	BUSHING		2
04-2081-753	ブッシュ	BUSHING		2
04-2187-661	六角穴付きボルト	BOLT		4
04-2294-214	オイルシール	OIL SEAL		2
04-2394-231	オイルシール	OIL SEAL		1

# 5. 針棒, 弓機構 NEEDLE BAR MECHANISM

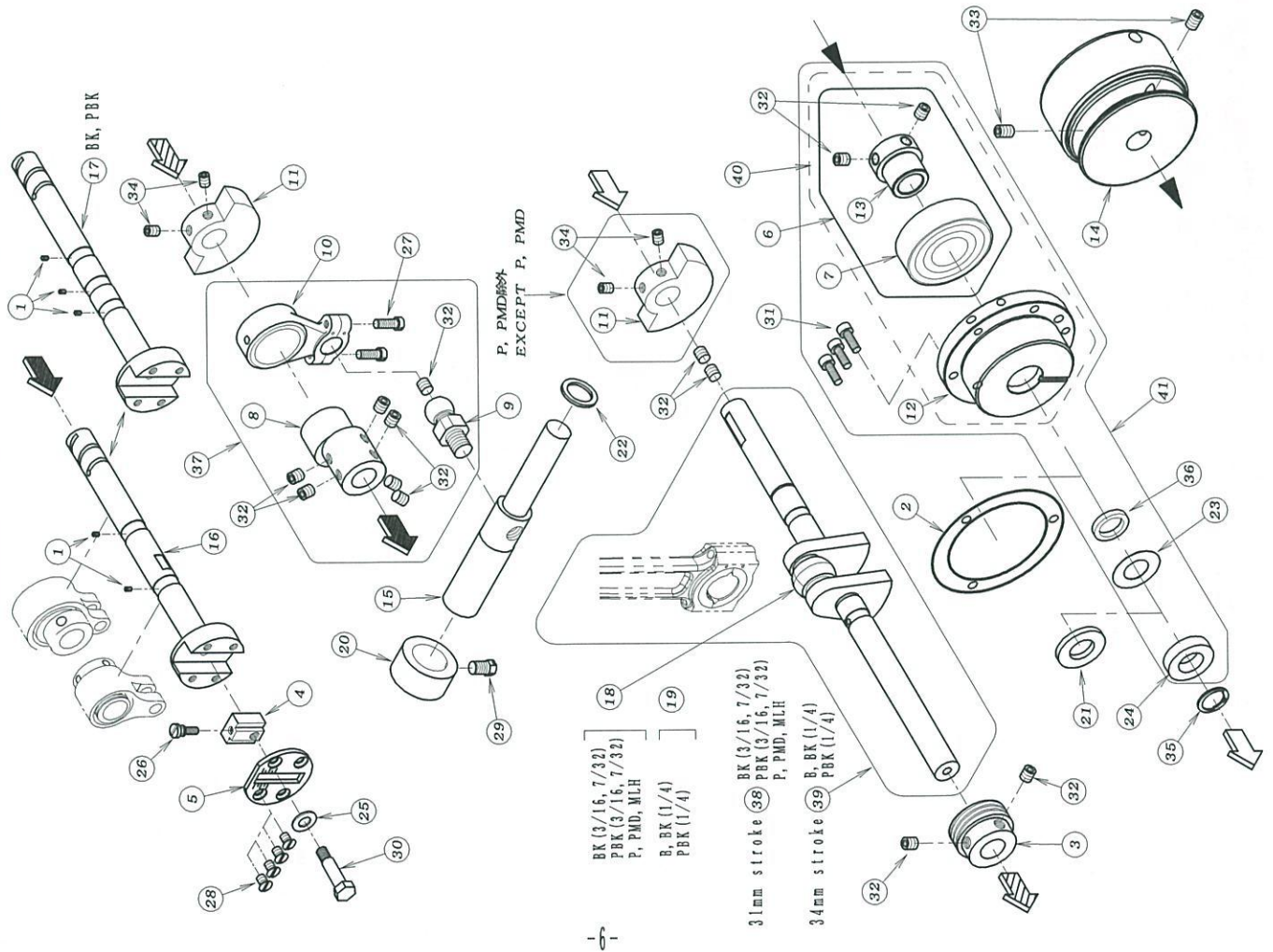


本部品はセットで梱包いたします。  
Only Available By Set No.

REF. NO.	PART NO.	品名	DESCRIPTION	Q'TY
05-01	11-704	針棒	NEEDLE BAR	1
05-02	23-195	O-リング*	O-RING	1
05-03	23-341	フェルト	FELT	2
05-04	23-383	フェルト	FELT	1
05-05	61-711	立ロッド玉	CONNECTING ROD BALL	1
05-06	63-386	針棒クランクロッド	CRANK ROD	1
05-07	66-111	連結メカ、ネ	CONNECTING LINK	1
05-08	69-105	弓 E	NEEDLE LEVER E	1
05-09	69-120	ロッド、振れ止め	GUIDE	1
05-10	71-432	メカ、ネビ、ン	FEED ROCKER LINK PIN	2
05-11	71-933	弓ビ、ン C	NEEDLE LEVER STUD	1
05-12	73-113	針棒クランク	NEEDLE BAR CLAMP	1
05-13	75-674	ワッシャ	WASHER	1
05-14	81-113	ブッシュ	BUSHING	1
05-15	81-412	ブッシュ	BUSHING	1
05-16	84-365	ネジ*	SCREW	1
05-17	84-366	ネジ*	SCREW	1
05-18	84-564	ネジ*	SCREW	1
05-19	84-567	ネジ*	SCREW	1
05-20	85-181	ネジ*	SCREW	1
05-21	87-172	ネジ*	SCREW	1
05-22	87-225	六角穴付きボルト	BOLT	1
05-23	87-242	ネジ*	SCREW	2
05-24	87-285	六角穴付きボルト	BOLT	2
05-25	87-299	六角穴付きボルト	BOLT	2
05-26	69-1050-2	弓(ブッシュ付)	NEEDLE LEVER (WITH BUSHING)	1
05-27	70-0140	クランクシャフトセット/31mm	CRANK SHAFT ASS'Y/31mm	1
05-28	70-0120	クランクシャフトセット/34mm	CRANK SHAFT ASS'Y/34mm	1

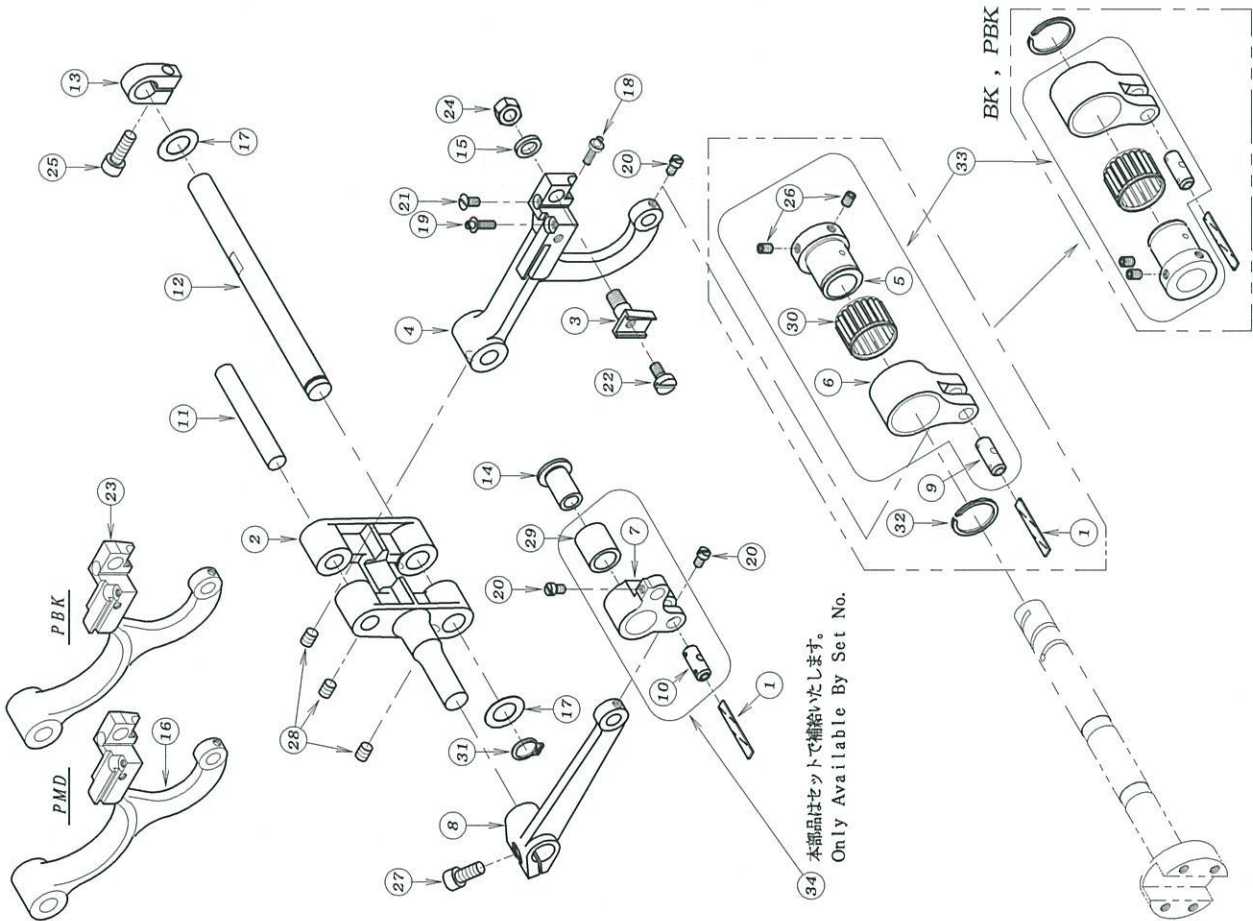


# 6. 下軸機構 CRANKSHAFT MECHANISM



REF. NO.	PART NO.	品名	DESCRIPTION	Q'TY
06-0123-554	フェルト	フェルト	FELT	5
06-0223-663	パッキン	パッキン	GASKET	1
06-0331-155	ポンプ駆動ギア	ポンプ駆動ギア	OIL PUMP DRIVING WARM	1
06-0451-017	送り調節ブロック	送り調節ブロック	ADJUSTING BLOCK	1
06-0551-031	メインシャフトヘッドプレート	メインシャフトヘッドプレート	PLATE	1
06-0660-9800	ベアリングセット	ベアリングセット	BEARING ASS'Y	1
06-0791-995	ベアリング	ベアリング	BEARING	1
06-0861-535	ループ-振元ロッドエキセン	ループ-振元ロッドエキセン	LOOPER ECCENTRIC	1
06-0961-723	ループ-振元ロッド玉	ループ-振元ロッド玉	LOOPER DRIVING ECCENTRIC	1
06-1063-517	ループ-振元ロッド	ループ-振元ロッド	CONNECTING ROD	1
06-1169-141	クラックモーション	クラックモーション	BALANCE WEIGHT	2
06-1269-461	ベアリングフレンジ	ベアリングフレンジ	FLANGE	1
06-1369-462	ベアリングスリーブ	ベアリングスリーブ	SLEEVE	1
06-1469-465	Vプーリー	Vプーリー	PULLEY	1
06-1571-612	ループ-振元シャフト	ループ-振元シャフト	LOOPER DRIVING SHAFT	1
06-1671-794	前下シャフト	前下シャフト	MAIN SHAFT	1
06-1771-795	前下シャフト	前下シャフト	MAIN SHAFT	1
06-1871-894	クラックシャフト	クラックシャフト	CRANK SHAFT	1
06-1971-895	クラックシャフト	クラックシャフト	CRANK SHAFT	1
06-2075-107	カラー	カラー	COLLAR	1
06-2175-329	ワッシャ	ワッシャ	WASHER	1
06-2275-332	ワッシャ	ワッシャ	WASHER	1
06-2375-351	ワッシャ	ワッシャ	WASHER	1
06-2475-352	スペーサー	スペーサー	WASHER	1
06-2575-452	ワッシャ	ワッシャ	WASHER	1
06-2684-383	調整ネジ	調整ネジ	SCREW	1
06-2784-635	ネジ	ネジ	SCREW	2
06-2884-661	ネジ	ネジ	SCREW	4
06-2985-212	ボルト	ボルト	BOLT	1
06-3087-017	送り調節ブロックボルト	送り調節ブロックボルト	BOLT	1
06-3187-129	六角穴付きボルト	六角穴付きボルト	BOLT	3
06-3287-172	ネジ	ネジ	SCREW	13
06-3387-242	ネジ	ネジ	SCREW	2
06-3487-254	ネジ	ネジ	SCREW	4
06-3593-264	止め輪	止め輪	RING	1
06-3694-214	オイルシール	オイルシール	OIL SEAL	1
06-3760-3761	ループ-振元ロッドセット	ループ-振元ロッドセット	CONNECTING ROD ASS'Y	1
06-3870-0140	クラックシャフトセット (31)	クラックシャフトセット (31)	CRANK SHAFT ASS'Y (31)	1
06-3970-0120	クラックシャフトセット (34)	クラックシャフトセット (34)	CRANK SHAFT ASS'Y (34)	1
06-4060-9790	フレンジセット	フレンジセット	FLANGE ASS'Y	1
06-4160-9780	ベアリングフレンジセット	ベアリングフレンジセット	BEARING FLANGE SET	1

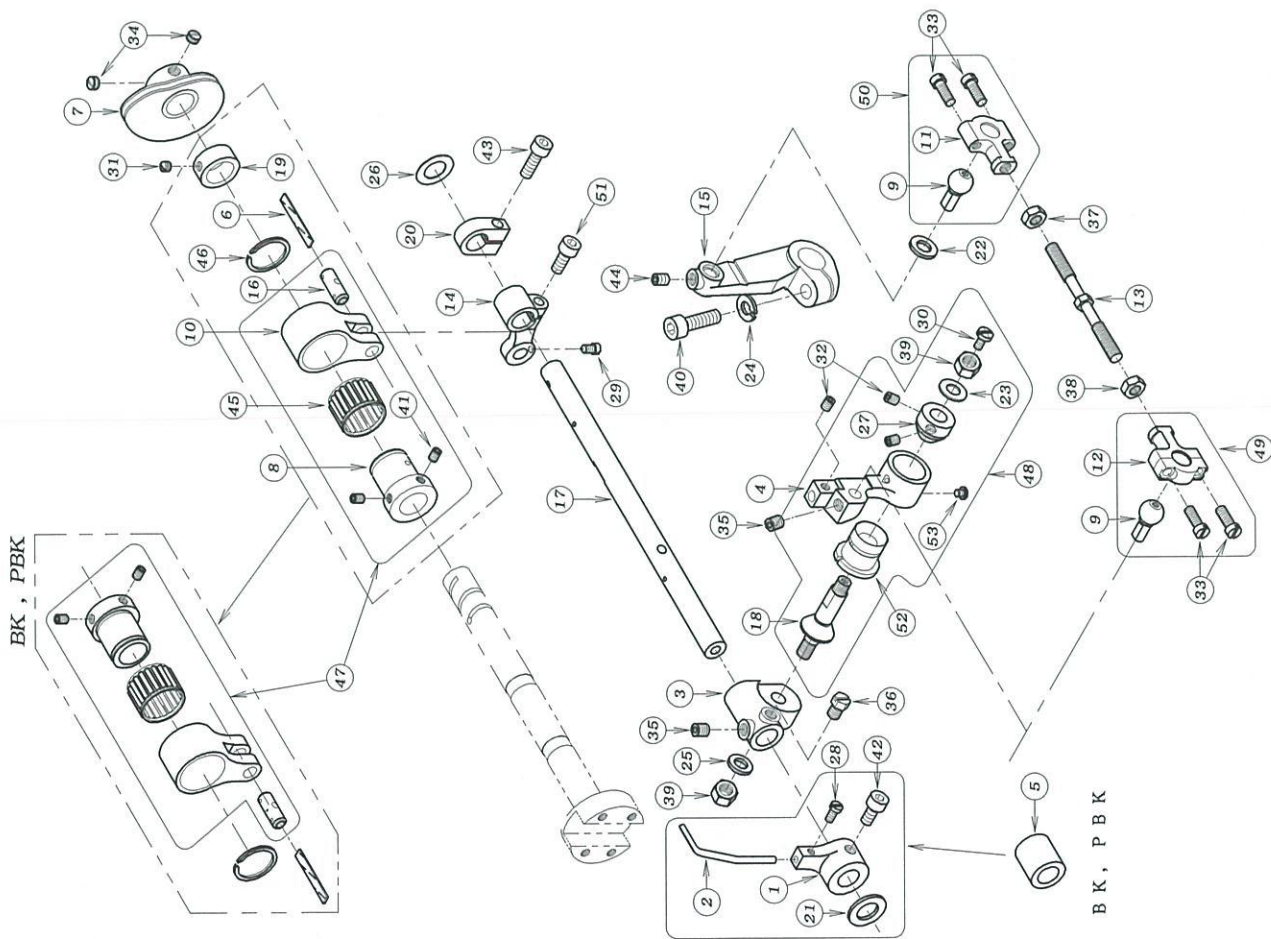
# 7. 送り機構 FEED MECHANISM



34) 本部品はセットで補給いたします。  
Only Available By Set No.

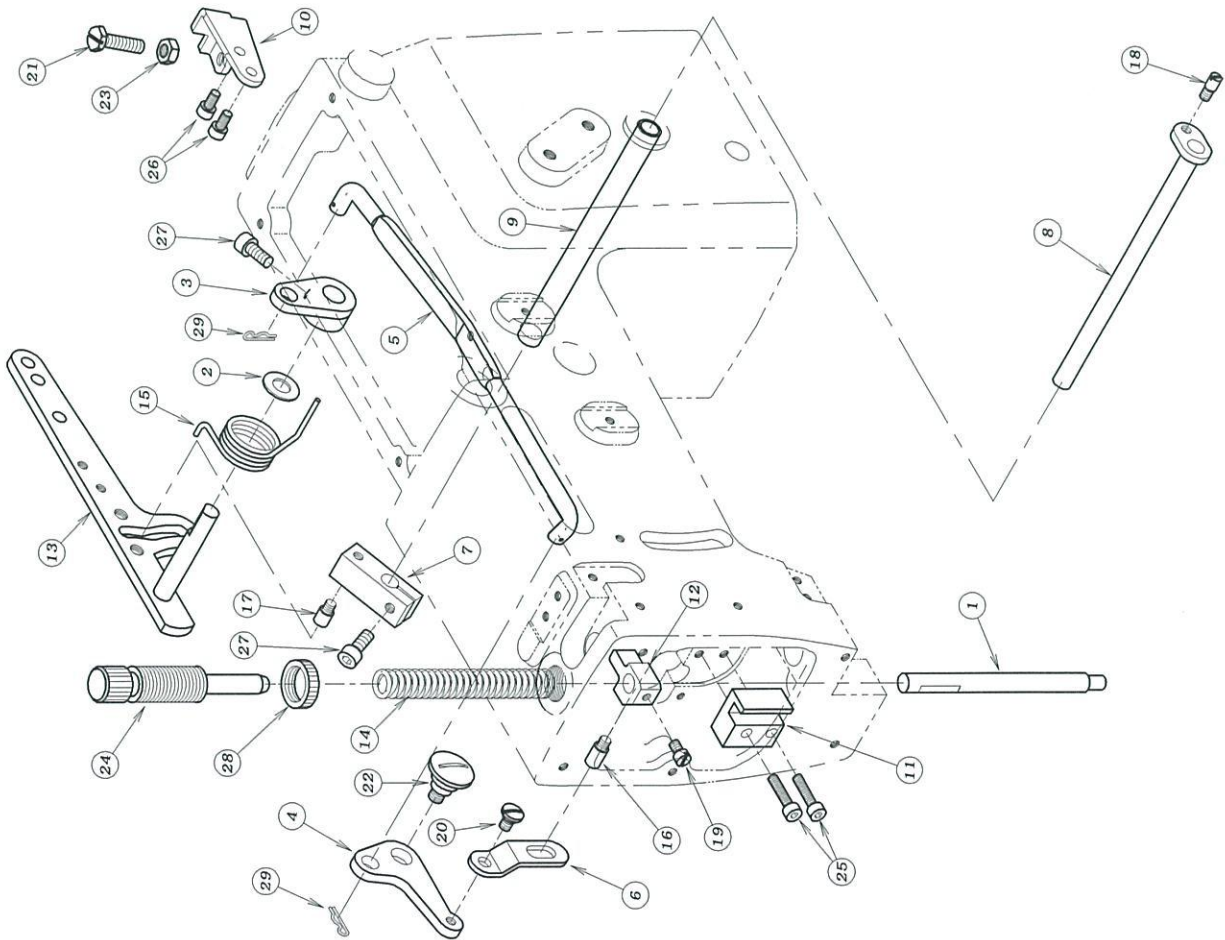
REF. NO.	PART NO.	品名	DESCRIPTION	QTY
07-01	23-341	フェルト	FELT	2
07-02	55-041	1枚送り元台	SINGLE FEED ROCKER ARM	1
07-03	55-051	送り歯取付台	FEED DOG HOLDER	1
07-04	55-176	送り土台	FEED ROCKER	1
07-05	61-028	針返しエキセン玉	FEED ECCENTRIC	1
07-06	63-232	エキセンダ* ルマ	ECCENTRIC LINK	1
07-07	63-353	送りダ* ルマ	FEED ROCKER LINK	1
07-08	67-311	送り連結レバ* -A	FEED ROCKER ARM	1
07-09	71-431	ピン	PIN	1
07-10	71-432	メカ* ネジ	FEED ROCKER LINK PIN	1
07-11	71-531	後送り歯取付シャフト	SHAFT	1
07-12	71-642	送り元台シャフト	FEED ROCKER ARM SHAFT	1
07-13	75-139	カラー	COLLAR	1
07-14	75-235	送りダ* ルマローラー	ROLLER	1
07-15	75-381	ワッシャ	WASHER	1
07-16	55-155	送り土台	FEED ROCKER	1
07-17	75-675	ワッシャ	WASHER	2
07-18	84-176	調節ネジ*	SCREW	1
07-19	84-177	調節ネジ*	SCREW	1
07-20	84-366	ネジ	SCREW	3
07-21	84-464	ネジ	SCREW	1
07-22	84-588	ネジ	SCREW	1
07-23	55-156	送り土台	FEED ROCKER	1
07-24	86-501	ナット	NUT	1
07-25	87-245	六角穴付きボルト	BOLT	1
07-26	87-181	ネジ	SCREW	2
07-27	87-252	六角穴付きボルト	BOLT	1
07-28	87-254	ネジ	SCREW	3
07-29	91-270	ニードル* ルベ* アリダ*	BEARING	1
07-30	91-005	ベ* アリダ*	BEARING	1
07-31	93-261	Cリング	C-RING	1
07-32	93-406	ストップ* リンク*	C-RING	1
07-33	60-0004	0.9エキセンダ* ルマセット	ECCENTRIC LINK ASS'Y	1
07-34	63-3530-2	送りダ* ルマセット	FEED ROCKER LINK ASS'Y	1

# 8. ルーパー機構 LOOPER MECHANISM (1)



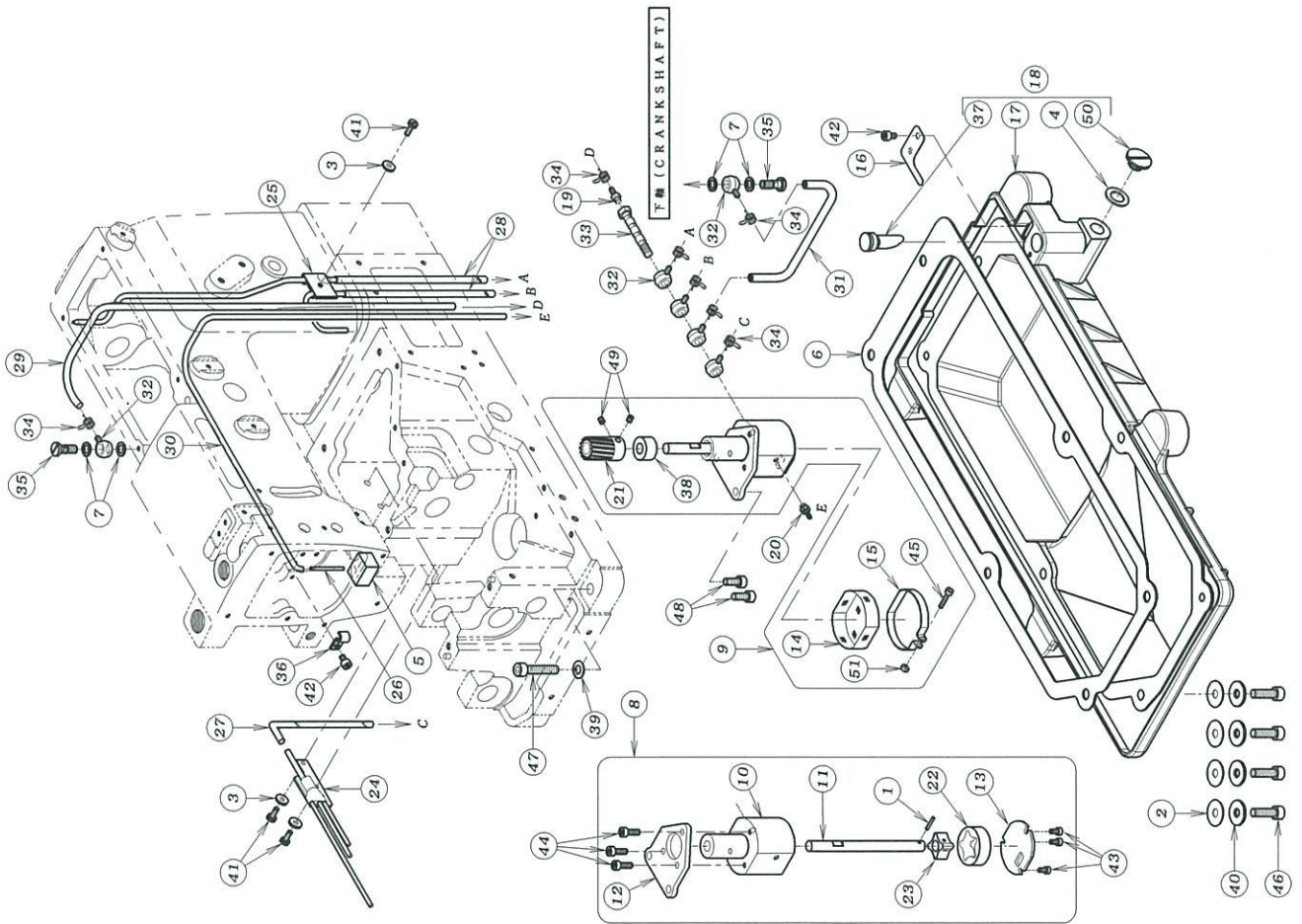
REF. NO.	PART NO.	品名	DESCRIPTION	Q'TY
08-01	118-722	針カ・イト・ブ・ラケット	NEEDLE GUIDE BRACKET	1
08-02	118-725	針カ・イト	NEEDLE GUIDE	1
08-03	119-289	ルーパー元台	LOOPER ROCKER	1
08-04	119-589	ルーパー台	LOOPER HOLDER	1
08-05	119-292	スハースカラー	COLLAR	1
08-06	123-341	フェルト	FELT	1
08-07	149-139	ハマグリ	LOOPER THREAD TAKE-UP CAM	1
08-08	161-029	針返しエキセン玉	LOOPER AVOID ECCENTRIC	1
08-09	161-513	ルーパー振元ロッド玉	CONNECTING BALL	2
08-10	163-232	エキセンダ・ルマ	ECCENTRIC LINK	1
08-11	163-811	連結ロッド右	BALL JOINT	1
08-12	163-812	連結ロッド左	BALL JOINT	1
08-13	165-435	連結棒	CONNECTING BAR	1
08-14	167-132	針返しルマレハ	LOOPER AVOID LEVER	1
08-15	167-229	ルーパー振元レハ	LOOPER DRIVING LEVER	1
08-16	171-431	ピン	PIN	1
08-17	171-561	ルーパー台シャフト	LOOPER HOLDER SHAFT	1
08-18	171-901	ルーパー台シャフト・ピン	TAPERED PIN	1
08-19	175-114	カラー	COLLAR	1
08-20	175-139	カラー	COLLAR	1
08-21	175-372	ワッシャ	WASHER	1
08-22	175-401	振止めワッシャ	WASHER	1
08-23	175-452	ワッシャ	WASHER	1
08-24	175-527	スプリングワッシャ	SPRING WASHER	1
08-25	175-552	ワッシャ	WASHER	1
08-26	175-675	ワッシャ	WASHER	1
08-27	181-401	ブッシュ	BUSHING	1
08-28	184-362	ネジ	SCREW	1
08-29	184-366	ネジ	SCREW	1
08-30	184-374	ネジ	SCREW	1
08-31	184-511	ネジ	SCREW	1
08-32	184-521	ネジ	SCREW	3
08-33	184-635	ネジ	SCREW	4
08-34	184-711	ネジ	SCREW	2
08-35	184-718	ネジ	SCREW	2
08-36	184-767	ネジ	SCREW	1
08-37	186-411	ナット	NUT	1
08-38	186-412	ナット	NUT	1
08-39	186-501	ナット	NUT	2
08-40	187-173	六角穴付きボルト	BOLT	1
08-41	187-181	ネジ	SCREW	2
08-42	187-213	六角穴付きボルト	BOLT	1
08-43	187-245	六角穴付きボルト	BOLT	1
08-44	187-254	ネジ	SCREW	1
08-45	191-005	ベアリング	BEARING	1
08-46	193-406	スタンプ・リンク	C-RING	1
08-47	160-0003	0.8エキセンダ・ルマセット	ECCENTRIC LINK ASS'Y	1
08-48	110-9300	ルーパー台セット	LOOPER HOLDER ASS'Y	1
08-49	160-3920	ルーパー振元ロッドセット(左)	CONNECTING ROD ASS'Y (LEFT)	1
08-50	160-3910	ルーパー振元ロッドセット(右)	CONNECTING ROD ASS'Y (RIGHT)	1
08-51	187-252	六角穴付きボルト	BOLT	1
08-52	119-587	ルーパー台ワッシャ	LOOPER HOLDER BUSHING	1
08-53	184-117	ネジ	SCREW	1

# 9 押え上げ機構 PRESSER FOOT MECHANISM



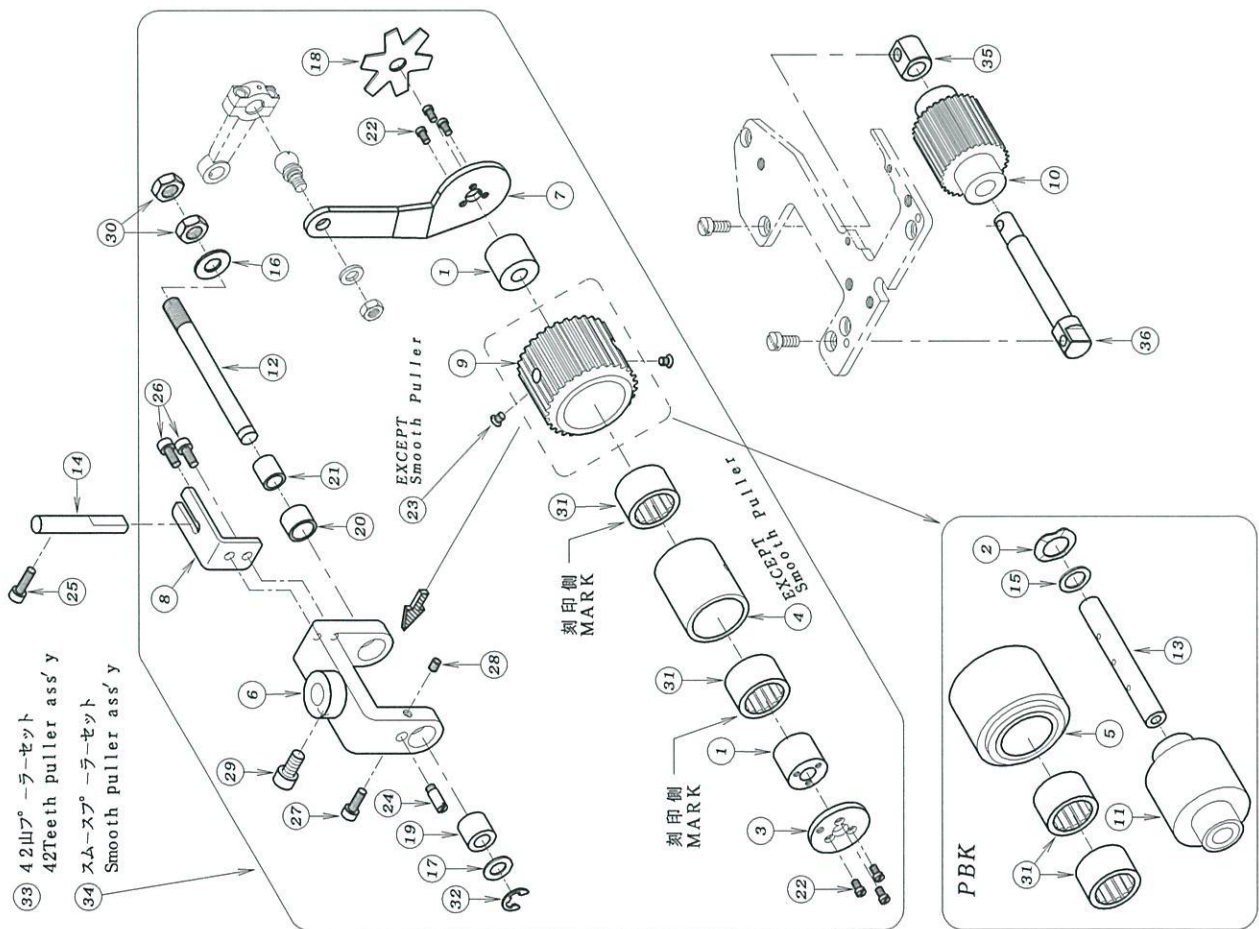
REF. NO.	PART NO.	品名	DESCRIPTION	QTY
09-01	71-542	押え棒 (小)	PRESSER BAR (SMALL)	1
09-02	75-180	ワッシャー	WASHER	1
09-03	77-107	へ、アリンク' 用押え揚げ連結板	CONNECTING PLATE	1
09-04	77-109	巻バ' ネ止め板	LIFTER LEVER SPRING SUPPORTER	1
09-05	77-116	押え揚げ連結棒	LIFTER LEVER CONNECTING BAR	1
09-06	77-131	押え棒巻き連結板	PLATE	1
09-07	77-163	調子心棒止め具	BRACKET	1
09-08	77-164	押え揚げクランクシャフト	SHAFT	1
09-09	77-165	パイプ	PIPE	1
09-10	77-509	ブラケット	BRACKET	1
09-11	77-516	押え棒ガイド	GUIDE	1
09-12	77-517	押え棒巻き	PRESSER BAR GUIDE	1
09-13	77-818	押え揚げコントロールレバ' -	PRESSER FOOT LIFTER LEVER	1
09-14	79-121	押え調整バ' ネ	PRESSER BAR SPRING	1
09-15	79-550	巻バ' ネ	SPRING	1
09-16	84-551	ネジ'	SCREW	1
09-17	84-561	ネジ'	SCREW	1
09-18	84-562	段ネジ'	SCREW	1
09-19	84-563	ネジ'	SCREW	1
09-20	84-581	段ネジ'	SCREW	1
09-21	84-813	ネジ'	SCREW	1
09-22	85-201	段ネジ'	SCREW	1
09-23	86-411	ナット	NUT	1
09-24	87-004	押え棒筒ネジ'	SCREW	1
09-25	87-112	六角穴付きボルト	BOLT	2
09-26	87-177	六角穴付きボルト	BOLT	2
09-27	87-252	六角穴付きボルト	BOLT	1
09-28	88-003	筒ネジ' ナット	NUT	1
09-29	93-611	スナップ' ピン	PIN	2

# 10. 給油機構 LUBRICATION MECHANISM



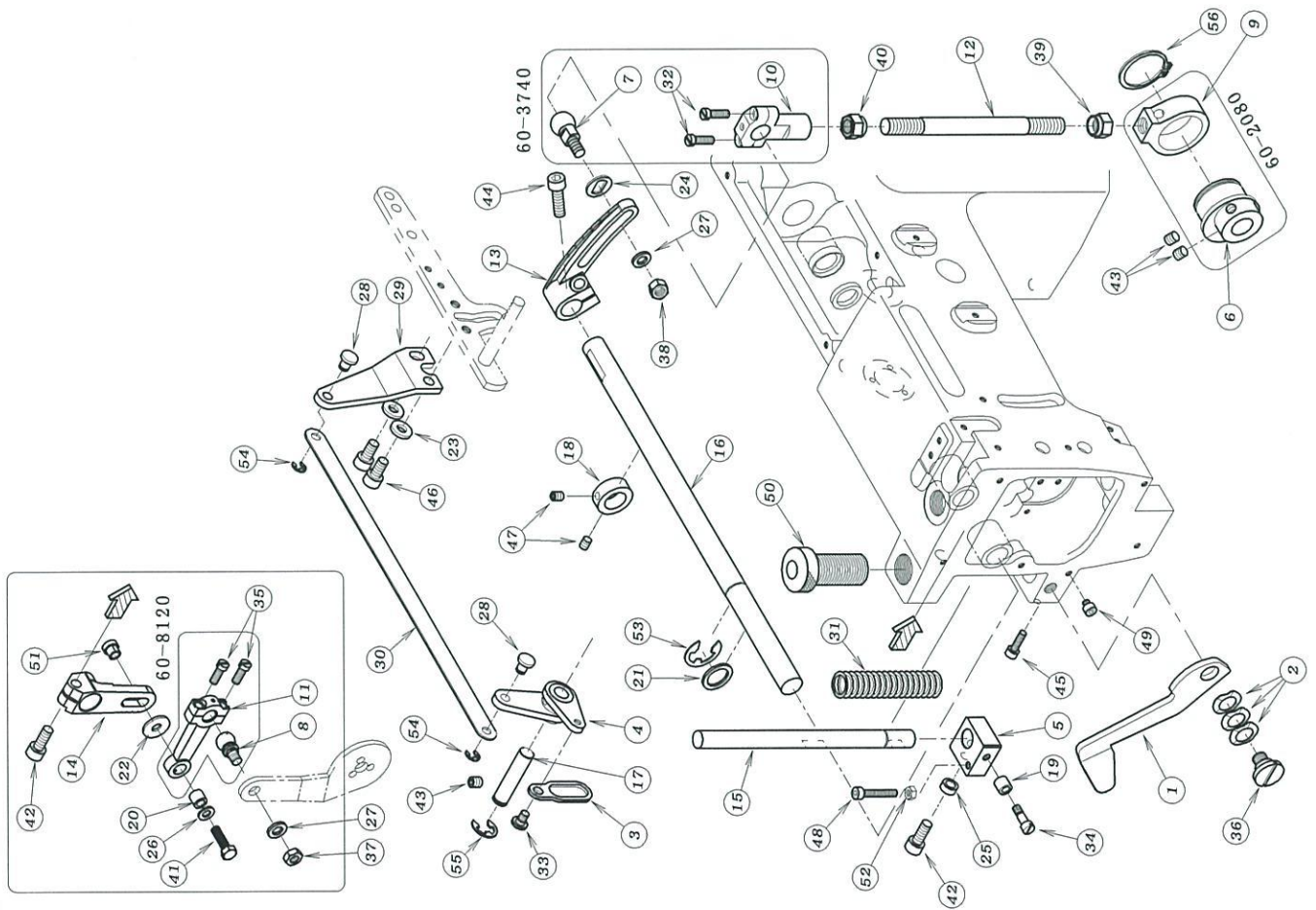
REF. NO.	PART NO.	品名	DESCRIPTION	QTY
10-0117	8010-G	ピン	PIN	1
10-0223	120	オイルタンクパッキン	GASKET	1
10-0323	160	配管油止めシール	SEAL WASHER	4
10-0423	304	シール	SEAL	3
10-0523	363	フェルト	FELT	1
10-0623	451	パッキン	GASKET	1
10-0723	514	シヨイントシール	JOINT SEAL	1
10-0830	0120	ホソソフセット	PUMP ASS'Y	4
10-0930	0121	ホソソフセット	PUMP ASS'Y	1
10-1031	151	トロイドホソソフハガジソク	PUMP HOUSING	1
10-1131	152	ホソソフ軸	PUMP SHAFT	1
10-1231	153	ホソソフ取付板	PLATE	1
10-1331	154	ホソソフ裏板	PUMP REAR PLATE	1
10-1431	156	ホソソフメッシュ	PUMP MESH	1
10-1531	157	ホソソフメッシュ止め金具	CLAMP	1
10-1631	271	濾過網	OIL FILTER SCREEN	1
10-1731	272	オイルタンク	OIL TANK	1
10-1831	2720-2	オイルタンクセット	OIL TANK ASS'Y	1
10-1931	314	継手	JOINT	1
10-2031	364	パイプ継手	JOINT	1
10-2131	702	ホソソフキー	PUMP GEAR	1
10-2231	705	アウトローター	OUTER ROTER	1
10-2331	707	インナーローター	INNER ROTER	1
10-2435	122	セハレト配管	PIPE	1
10-2535	246	立ロット用配管	PIPING	1
10-2635	257	パイプA	PIPE A	1
10-2735	315	ビニールチューブ	TUBE	1
10-2835	317	ビニールチューブ	TUBE	2
10-2935	318	ビニールチューブ	TUBE	1
10-3035	322	ビニールチューブ(φ4Xφ2, 600L)	TUBE	1
10-3135	343	パイプチューブ	TUBE	1
10-3235	361	片口管継手(小)	JOINT	6
10-3335	362	管継手ボルト	JOINT SCREW	1
10-3435	413	止め金具	CLAMP	7
10-3535	528	管継手ボルト	JOINT SCREW	2
10-3639	133	パイプサポートC	PIPE SUPPORT C	1
10-3739	218	オイルゲージ	OIL GAUGE	1
10-3875	185	ホソソフスベースカラー	COLLAR	1
10-3975	452	ワッシャ	WASHER	2
10-4075	536	ワッシャ	WASHER	4
10-4184	363	ネジ	SCREW	3
10-4287	092	六角穴付きボルト	BOLT	2
10-4387	123	六角穴付きボルト	BOLT	3
10-4487	129	六角穴付きボルト	BOLT	3
10-4587	140	六角穴付きボルト	BOLT	1
10-4687	173	六角穴付きボルト	BOLT	4
10-4787	183	六角穴付きボルト	BOLT	2
10-4887	252	六角穴付きボルト	BOLT	2
10-4987	286	ネジ	SCREW	2
10-5087	311	ワタネジ	SCREW	1
10-5188	137	ナット	NUT	1

11 後プーラー機構 (P, PMD) REAR PULLER MECHANISM



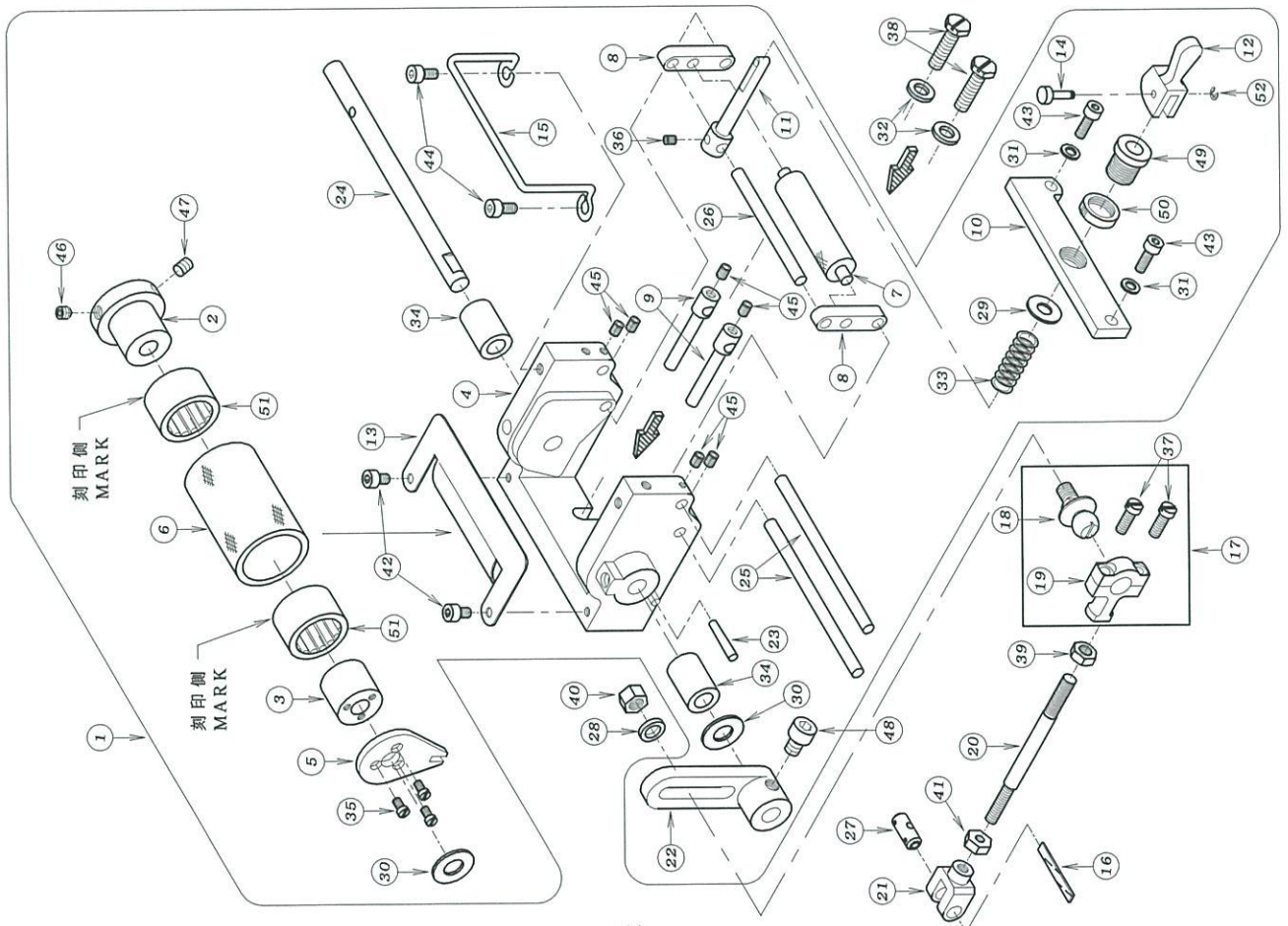
REF. NO.	PART NO.	品名	DESCRIPTION	QTY
11-01	01-103	連結板スリーブ	SLEEVE	2
11-02	02-116	波ワッシャ	WAVE WASHER	1
11-03	02-117	後プーラー板	PLATE	1
11-04	02-122	ワッシャ付ハウジング (小)	HOUSING	1
11-05	02-189	後プーラー上 (コ・A)	REAR PULLER (SMOOTH)	1
11-06	02-251	後プーラー台小	REAR PULLER BRACKET	1
11-07	02-470	連結板	CONNECTING PLATE	1
11-08	02-266	後プーラー台回り止め	PLATE	1
11-09	02-488	後プーラー上アイロンキア-42山	REAR PULLER GEAR	1
11-10	02-489	後プーラー下キア-30山	REAR PULLER GEAR	1
11-11	02-301	後プーラー下ボム	REAR PULLER	1
11-12	71-443	後プーラー台シャフト (小)	SHAFT	1
11-13	71-651	後プーラー下シャフト	REAR PULLER SHAFT (LOWER)	1
11-14	71-921	プーラー回り止め棒	PULLER GUIDE PIN	1
11-15	75-380	ワッシャ	WASHER	1
11-16	75-451	ワッシャ	WASHER	1
11-17	75-519	ワッシャ	WASHER	1
11-18	79-551	プーラー板ハネ	PULLER PLATE SPRING	1
11-19	81-321	ブッシュ	BUSHING	1
11-20	81-322	ブッシュ	BUSHING	1
11-21	81-323	ブッシュ	BUSHING	1
11-22	84-162	ネジ	SCREW	6
11-23	84-465	ネジ	SCREW	2
11-24	84-573	段ネジ	SCREW	2
11-25	87-214	六角穴付きボルト	BOLT	1
11-26	87-113	六角穴付きボルト	BOLT	2
11-27	87-129	六角穴付きボルト	BOLT	1
11-28	87-181	ネジ	SCREW	1
11-29	87-225	六角穴付きボルト	BOLT	1
11-30	88-179	ナット	NUT	2
11-31	91-405	ワッシャ付ラック	BEARING	2
11-32	93-221	ストップリンク	E-RING	1
11-33	00-0422	42山プーラーセット	42TEETH PULLER ASS'Y	1
11-34	00-2006	スムースプーラーセット	SMOOTH PULLER ASS'Y	1
11-35	02-278	カラB	COLLAR	1
11-36	71-439	後プーラー下シャフト (短)	REAR PULLER SHAFT (S)	1

12. 後プーラー機構 REAR PULLER MECHANISM



REF. NO.	PART NO.	品名	DESCRIPTION	Q'TY
12-011	02-029	手摺分用金具	LEVER	1
12-020	02-030	渡ワッシャ	WASHER	3
12-030	02-205	連結プレート	PLATE	1
12-040	02-219	後プーラー揚げレバ	LEVER	1
12-050	02-224	後プーラー立シヤフト軸	BRACKET	1
12-060	61-208	上シヤフト連結エキセン玉	PULLER DRIVING ECCENTRIC	1
12-070	61-714	上シヤフト連結ロッド玉	CONNECTING ROD BALL	1
12-080	61-810	プーラー連結ロッド玉	CONNECTING ROD BALL	1
12-090	63-208	上シヤフト連結カ'ルマ	CONNECTING LINK	1
12-100	63-711	立ロッド(小)	BALL JOINT	1
12-110	63-809	プーラー連結ロッド	BALL JOINT	1
12-120	65-302	上シヤフト連結棒	CONNECTING BAR	1
12-130	67-172	上シヤフト連結レバ'後	PULLER DRIVING LEVER (REAR)	1
12-140	67-173	上シヤフト連結レバ'前	PULLER DRIVING LEVER (FRONT)	1
12-150	71-450	後プーラー立シヤフト	SHAFT	1
12-160	71-691	プーラー上シヤフト	PULLER DRIVING SHAFT	1
12-170	71-726	シヤフト	SHAFT	1
12-180	75-112	カラ	COLLAR	1
12-190	75-211	カラ	COLLAR	1
12-200	75-247	連結メカ'ネローラ	ROLLER	1
12-210	75-332	ワッシャ	WASHER	1
12-220	75-407	ワッシャ	WASHER	1
12-230	75-458	ワッシャ	WASHER	2
12-240	75-491	ワッシャ	WASHER	1
12-250	75-493	カラ	COLLAR	1
12-260	75-520	ワッシャ	WASHER	1
12-270	75-552	ワッシャ	WASHER	2
12-280	77-419	押え揚げ連結ピン	PIN	2
12-290	77-420	押え揚げ連結板	PLATE	1
12-300	77-425	押え揚げ連結板	PLATE	1
12-310	79-425	プーラー圧縮バネ	SPRING	1
12-320	84-567	ネジ	SCREW	2
12-330	84-581	段ネジ	SCREW	1
12-340	84-582	段ネジ	SCREW	1
12-350	84-635	ネジ	SCREW	2
12-360	85-002	段ネジ	SCREW	1
12-370	86-411	ナット	NUT	1
12-380	86-501	ナット	NUT	1
12-390	86-741	ナット	NUT	1
12-400	86-742	ナット	NUT	1
12-410	87-015	ネジ	SCREW	1
12-420	87-171	六角穴付きボルト	BOLT	2
12-430	87-172	ネジ	SCREW	3
12-440	87-173	六角穴付きボルト	BOLT	1
12-450	87-214	六角穴付きボルト	BOLT	1
12-460	87-225	六角穴付きボルト	BOLT	2
12-470	87-254	ネジ	SCREW	2
12-480	87-285	六角穴付きボルト	BOLT	1
12-490	87-287	六角穴付きボルト	BOLT	1
12-500	87-754	プーラー筒ネジ	SCREW	1
12-510	88-013	前プーラーナット	NUT	1
12-520	88-146	ナット	NUT	1
12-530	93-203	E型止め輪	E-RING	1
12-540	93-205	Eリング	E-RING	2
12-550	93-222	Eリング	E-RING	1
12-560	93-258	軸用止め輪	SNAP RING	1

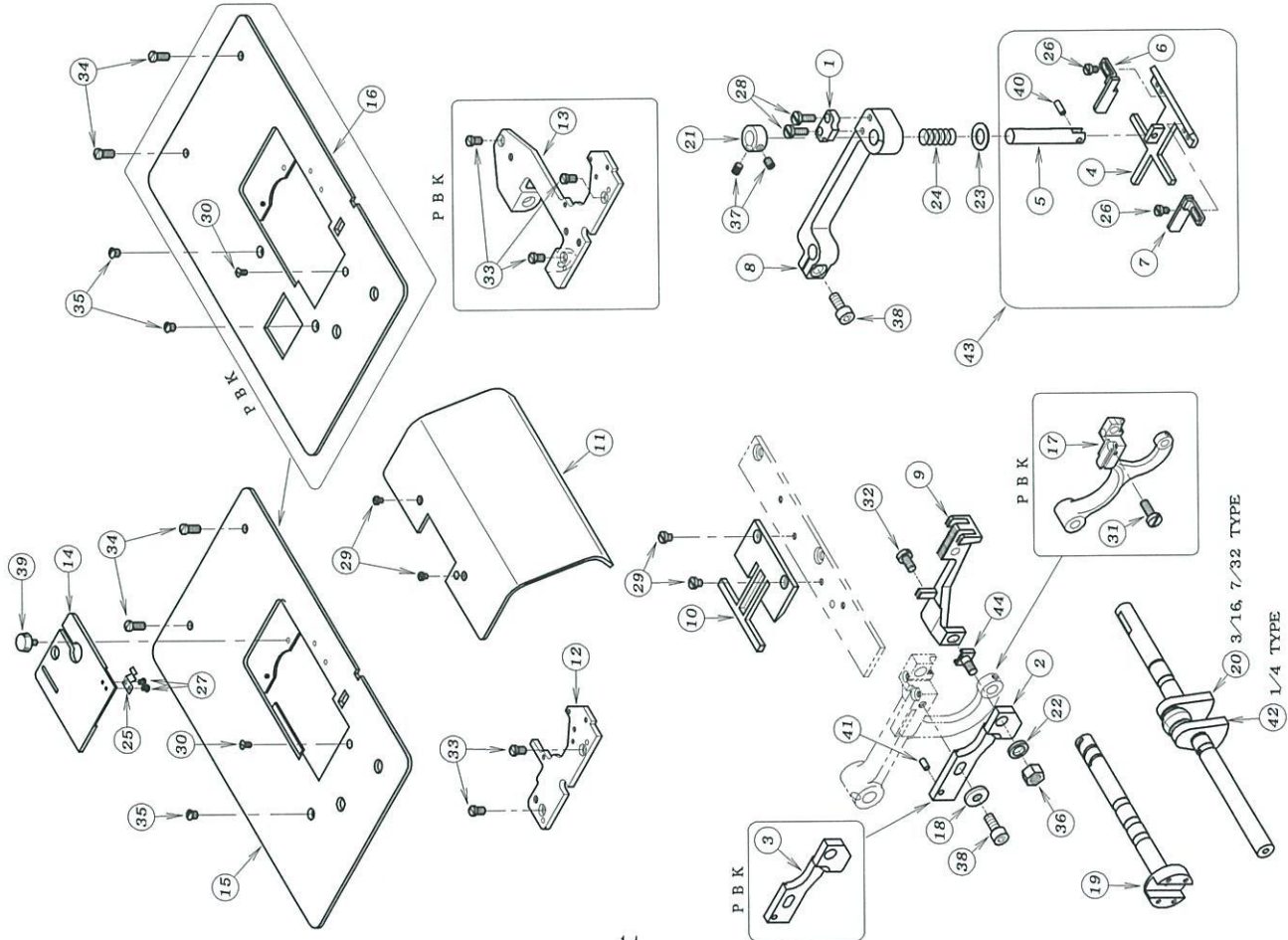
# 13. 前プーラー機構 METERING DEVICE MECHANISM



REF. NO.	PART NO.	品名	DESCRIPTION	QTY
13-0100-1401	PMD装置(組)		METERING DEVICE ASS'Y	1
13-0201-102	フタ側スリーブ		SLEEVE	1
13-0301-103	連結板側スリーブ		SLEEVE	1
13-0401-111	前プーラー土台		BRACKET	1
13-0501-116	前プーラー回り止め蓋		PLATE	1
13-0601-132	前プーラーローレット		PULLER	1
13-0701-134	前プーラー小ローラー		LOWER ROLLER	1
13-0801-136	前プーラー小ローラー取付金具		ROLLER HOLDER	2
13-0901-138	前プーラーコマ案内金具		PIVOT SHAFT HOLDER	2
13-1001-141	前プーラー締め金具		RUBBER TIGHTENER	1
13-1101-143	小ローラー締め金具		ROLLER CONTROLLER	1
13-1201-145	ワシタツチレバ		LEVER	1
13-1301-146	前プーラーカバー		COVER	1
13-1401-147	レバ連結ピン		PIN	1
13-1501-152	ガイド		GUIDE	1
13-1623-341	フェルト		FELT	1
13-1760-8271	連結ロッドセット		CONNECTING ROD ASS'Y	1
13-1861-821	ロッド玉		CONNECTING ROD BALL	1
13-1963-812	連結ロッド左		BALL JOINT	1
13-2065-334	前プーラー連結棒		PULLER CONNECTING BAR	1
13-2166-131	連結片メカネ		CONNECTING LINK	1
13-2267-180	前プーラー連結レバ		PULLER CONNECTING LEVER	1
13-2371-227	チハネピン		PIN	1
13-2471-350	前プーラー土台シャフト		SHAFT	1
13-2571-361	案内棒大		PIVOT SHAFT (LARGE)	2
13-2671-362	案内棒小		PIVOT SHAFT (SMALL)	1
13-2771-432	メカネピン		FEED ROCKER LINK PIN	1
13-2875-381	ワシタツチ		WASHER	1
13-2975-446	ワシタツチ		WASHER	1
13-3075-451	ワシタツチ		WASHER	2
13-3175-468	ワシタツチ		WASHER	2
13-3275-552	ワシタツチ		WASHER	2
13-3379-171	圧縮バネ		SPRING	1
13-3481-125	ブッシュ		BUSHING	2
13-3584-162	ネジ		SCREW	3
13-3684-314	ネジ		SCREW	1
13-3784-635	ネジ		SCREW	2
13-3884-813	ネジ		SCREW	2
13-3986-412	ナット		NUT	1
13-4086-501	ナット		NUT	1
13-4186-701	ナット		NUT	1
13-4287-092	六角穴付きボルト		BOLT	2
13-4387-129	六角穴付きボルト		BOLT	2
13-4487-177	六角穴付きボルト		BOLT	2
13-4587-181	ネジ		SCREW	6
13-4687-253	ネジ		SCREW	1
13-4787-254	ネジ		SCREW	1
13-4887-255	六角穴付きボルト		BOLT	1
13-4987-456	調節ネジ		SCREW	1
13-5088-456	ナット		NUT	1
13-5191-405	ワシタツチ		BEARING	2
13-5293-200	ストップリング		E-RING	1

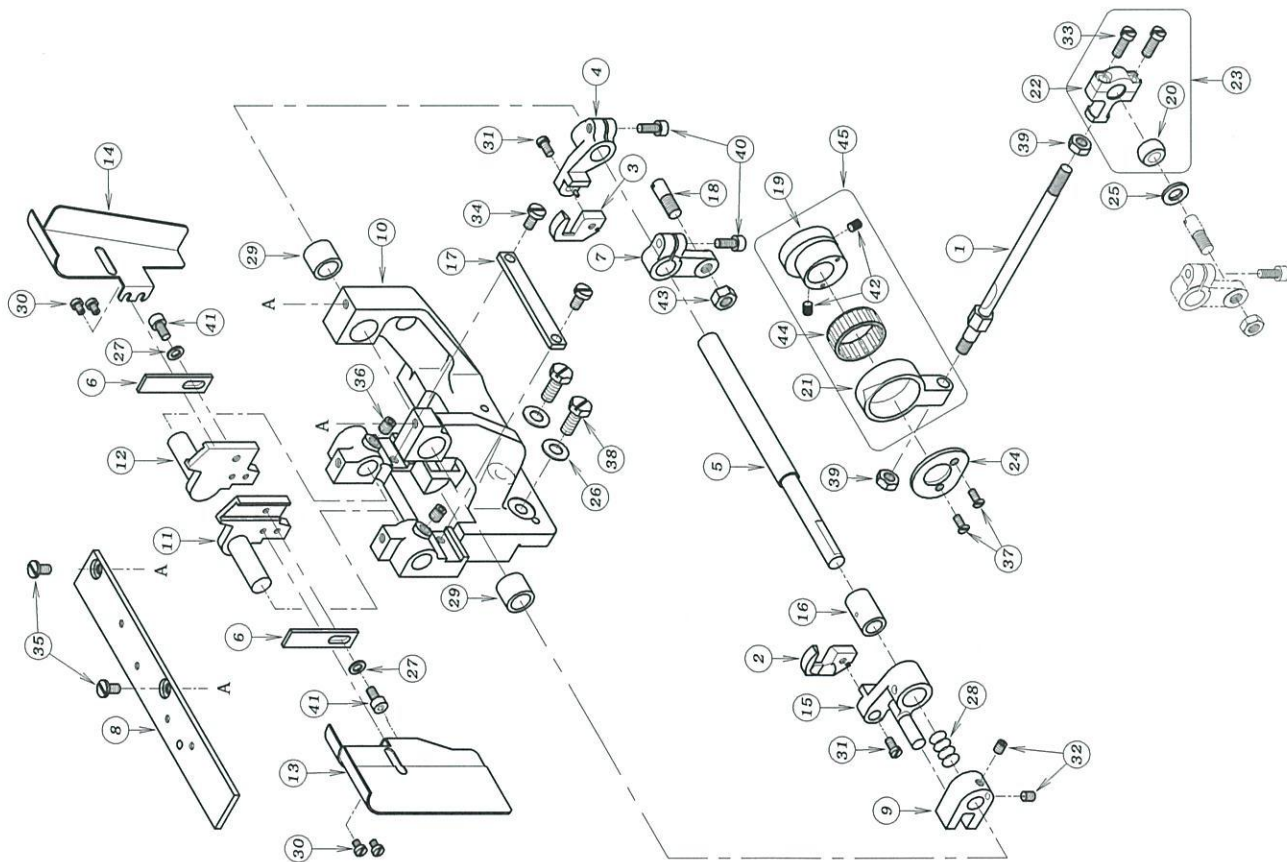


14. BK 専用部品 (1) MODEL BK EXCLUSIVE PARTS (1)



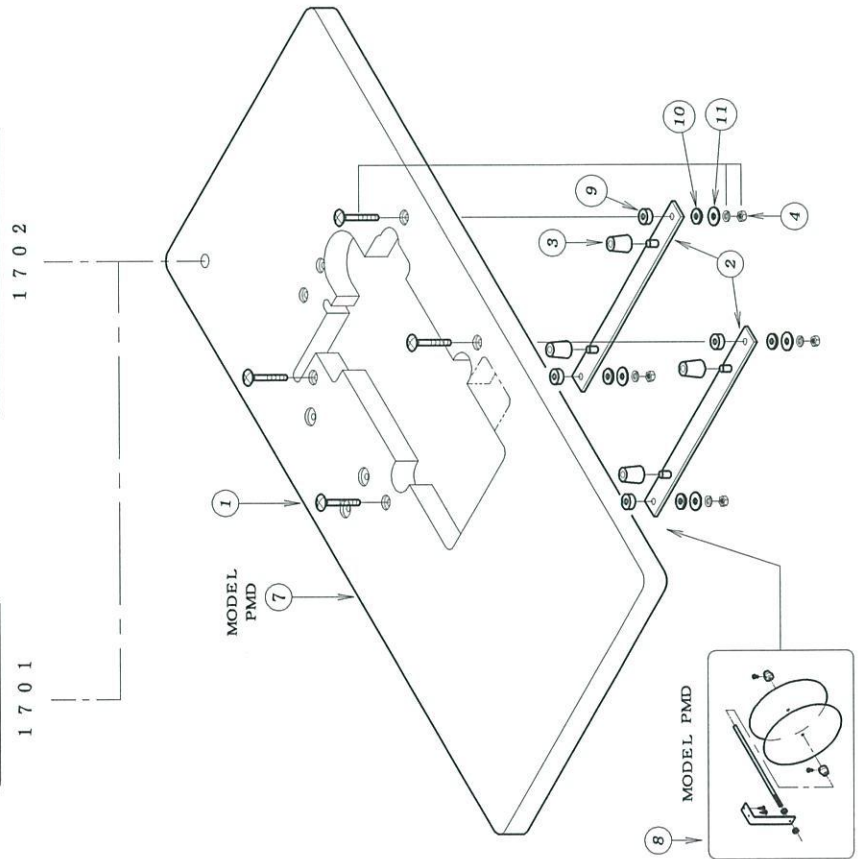
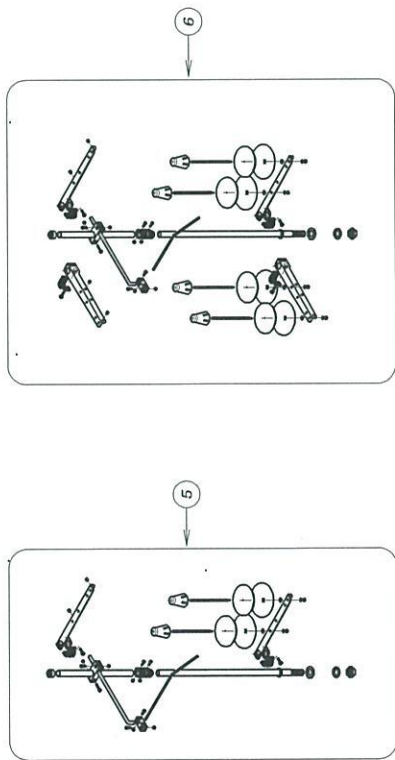
REF. NO.	PART NO.	品名	DESCRIPTION	QTY
14-01	07-295	ガイドプレート	GUIDE PLATE	1
14-02	07-388	補助送前プレート	BRACKET	1
14-03	07-389	補助送前プレート	BRACKET	1
14-04	07-3950-A	補助押え足	PRESSER FOOT BOTTOM	1
14-05	07-3950-D	ガイドピン	PIN	1
14-06	07-3950-B	補助足(右)	GUIDE (R)	1
14-07	07-3950-C	補助足(左)	GUIDE (L)	1
14-08	07-722	補助押えプレート	SUPPORT BRACKET	1
14-09	07-726	補助送前	FEED DOG	1
14-10	07-728	補助送り板	PLATE	1
14-11	07-750	生機案内板	GUIDE COVER	1
14-12	14-066	針板土台	NEEDLE PLATE SUPPORT BRACKET	1
14-13	14-067	針板土台	NEEDLE PLATE SUPPORT BRACKET	1
14-14	21-227	差板	SLIDE COVER	1
14-15	21-393	上ヘースカハ	UPPER COVER	1
14-16	21-394	上ヘースカハ	UPPER COVER	1
14-17	55-156	送り土台	FEED ROCKER	1
14-18	75-456	ワッシャ	WASHER	1
14-19	71-795	前下シャフト	MAIN SHAFT	1
14-20	71-894	クランクシャフト	CRANK SHAFT	1
14-21	75-152	カラー	COLLAR	1
14-22	75-381	ワッシャ	WASHER	1
14-23	75-519	ワッシャ	WASHER	1
14-24	79-142	ハネ	SPRING	1
14-25	79-801	ハネ	SPRING	1
14-26	84-161	ネジ	SCREW	2
14-27	84-163	ネジ	SCREW	2
14-28	84-363	ネジ	SCREW	2
14-29	84-364	ネジ	SCREW	4
14-30	84-464	ネジ	SCREW	1
14-31	84-566	ネジ	SCREW	1
14-32	84-571	ネジ	SCREW	1
14-33	84-761	ネジ	SCREW	5
14-34	84-763	ネジ	SCREW	2
14-35	84-862	ネジ	SCREW	1~2
14-36	86-501	ナット	NUT	1
14-37	87-181	ネジ	SCREW	2
14-38	87-252	六角穴付きボルト	BOLT	2
14-39	87-292	調節ネジ	SCREW	1
14-40	93-720	スプラインピン	PIN	1
14-41	93-727	スプラインピン	PIN	1
14-42	71-895	クランクシャフト	CRANK SHAFT	1
14-43	07-3950-2	補助押えプレート	PRESSER FOOT ASS'Y	1
14-44	55-053	送り歯取付台	FEED DOG HOLDER	1

15. BK 専用部品 (2) MODEL BK EXCLUSIVE PARTS (2)



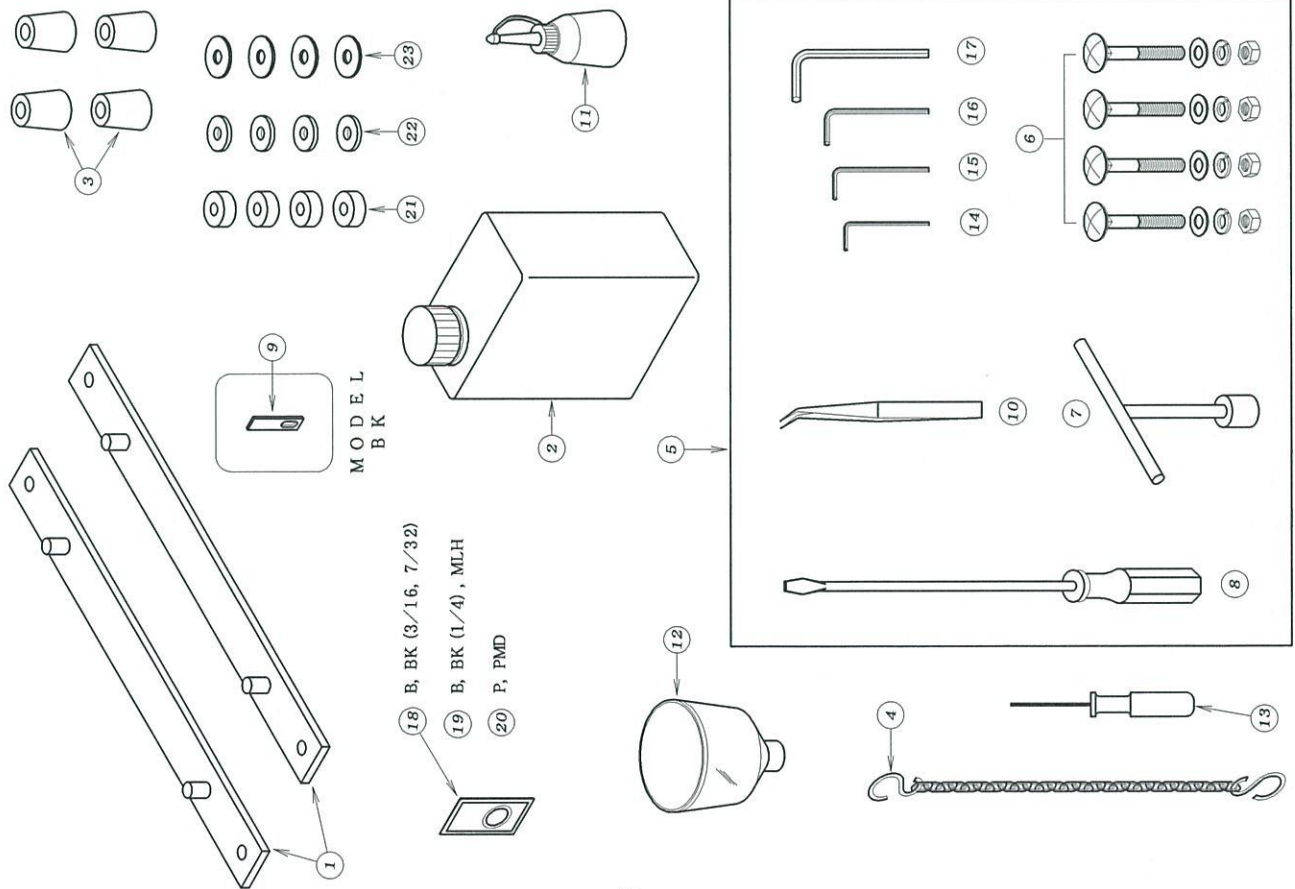
REF. NO.	PART NO.	品名	DESCRIPTION	QTY
15-0107-701		前メス連結ハ-	CONNECTING BAR	1
15-0207-702		上メス (左)	UPPER KNIFE (L)	1
15-0307-703		上メス (右)	UPPER KNIFE (R)	1
15-0407-705		上メスフ ラケット (右)	UPPER KNIFE BRACKET (R)	1
15-0507-706		上メス運動シャフト	SHAFT	1
15-0607-707		下メス	LOWER KNIFE	2
15-0707-721		上メス駆動レバ-	LEVER	1
15-0807-733		取り付補助板	PLATE	1
15-0907-739		上メスフ ヨイントフ ラケット	JOINT BRACKET	1
15-1007-742		ヘ-スフ ラケット	BASE BRACKET	1
15-1107-743		下メス取り付台 (左)	LOWER KNIFE HOLDER (L)	1
15-1207-744		下メス取り付台 (右)	LOWER KNIFE HOLDER (R)	1
15-1307-746		切りかきカ'イト'カハ'- (左)	CHIP GUIDE COVER (L)	1
15-1407-747		切りかきカ'イト'カハ'- (右)	CHIP GUIDE COVER (R)	1
15-1507-748		上メスフ ラケット (左)	UPPER KNIFE BRACKET (L)	1
15-1607-749		フッシユ	BUSHING	1
15-1707-751		カ'イト'フ レ-ト	GUIDE PLATE	1
15-1807-752		連結ロットピ-ン	PIN	1
15-1961-255		前メスエキセン	ECCENTRIC	1
15-2061-841		前メスフ ヨイントホ-ル	JOINT BALL	1
15-2163-211		前メス連結ダ'ルマ	ECCENTRIC LINK	1
15-2263-811		連結ロット右	BALL JOINT	1
15-2360-3830		前メス連結ロットセット	CONNECTING ROD ASS'Y	1
15-2475-254		エキセン止め板	PLATE	1
15-2575-401		振止めワッシヤ	WASHER	1
15-2675-452		ワッシヤ	WASHER	2
15-2775-468		ワッシヤ	WASHER	2
15-2879-148		ハ'ネ	SPRING	1
15-2981-704		フッシユ	BUSHING	2
15-3084-161		ネジ'	SCREW	4
15-3184-362		ネジ'	SCREW	2
15-3284-521		ネジ'	SCREW	2
15-3384-635		ネジ'	SCREW	2
15-3484-571		ネジ'	SCREW	2
15-3584-574		ネジ'	SCREW	2
15-3684-718		ネジ'	SCREW	2
15-3784-192		ネジ'	SCREW	2
15-3884-812		ネジ'	SCREW	2
15-3986-411		ナット	NUT	2
15-4087-113		六角穴付きボルト	BOLT	2
15-4187-177		六角穴付きボルト	BOLT	2
15-4287-181		ネジ'	SCREW	2
15-4388-166		ナット	NUT	1
15-4491-411		前メスフ'アリンク'	BEARING	1
15-4560-1330		前メスエキセンダ'ルマセット	ECCENTRIC LINK ASS'Y	1

16. 糸立て及びテーブル THREAD STAND AND TABLE



REF. NO.	PART NO.	品名	DESCRIPTION	Q'TY
16-01	21-045	テーブル	TABLE	1
16-02	25-140	タンク取付金具	SUPPORTING BOARD	2
16-03	31-163	クッションコ' A	CUSHION RUBBER	4
16-04	80-751	根角ボ' ルト	BOLT	4
16-05	42-002	2本糸立て	THREAD STAND ASSEMBLY FOR 2	1
16-06	42-704	4本糸立て	THREAD STAND ASSEMBLY FOR 4	1
16-07	21-0450-1	PMD用テーブル	TABLE	1
16-08	20-6030-0	テープ立て	TAPE STANDS	1
16-09	23-121	テープル取付コ' AA	CUSHION RUBBER	4
16-10	23-122	テープル取付コ' AB	CUSHION RUBBER	4
16-11	75-535	ワッシャー	WASHER	4

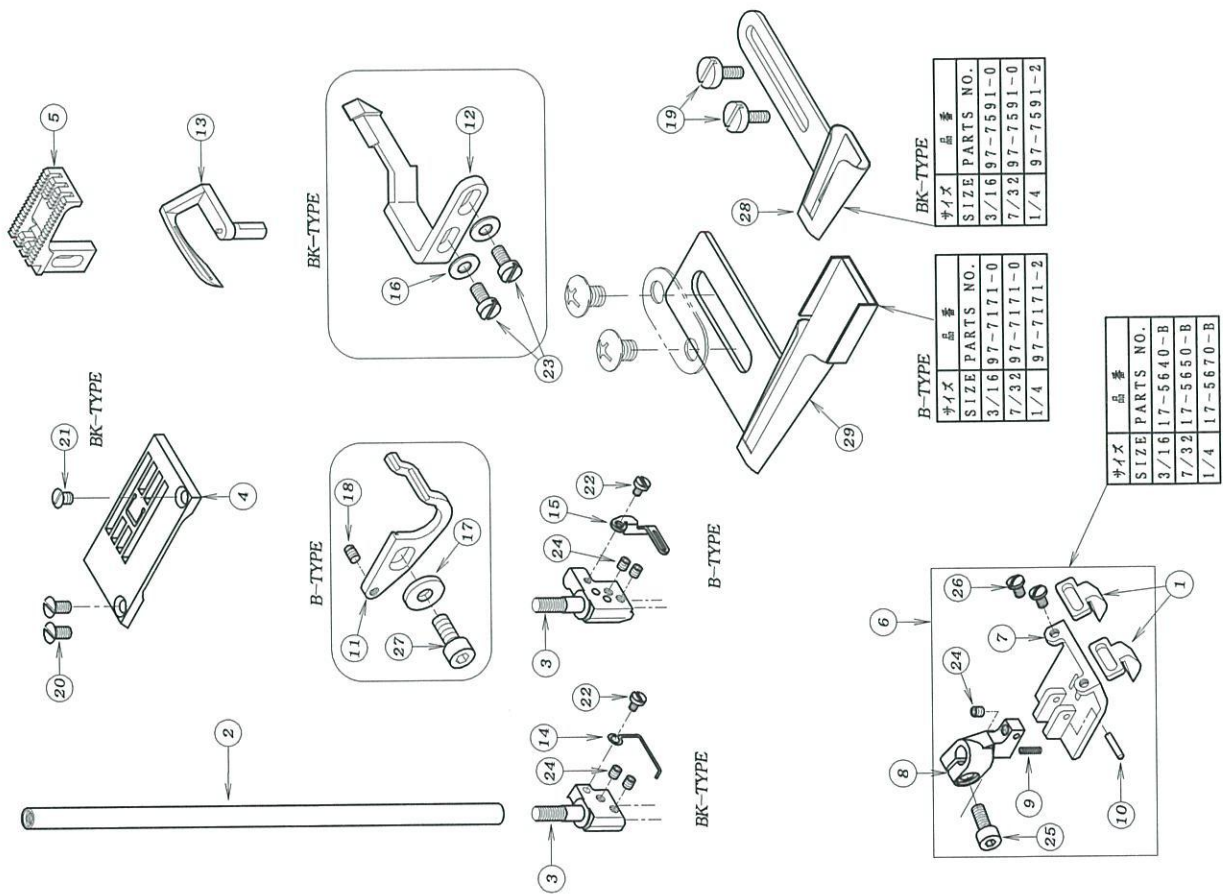
# 17. アクセサリー - ACCESSORIES



REF. NO.	PART NO.	品名	DESCRIPTION	Qty
17-01	25-140	タンク取付器具	MACHINE MOUNT BRACKET	2
17-02	28-611	ミシン潤滑油	OIL	1
17-03	31-163	クッションゴム A	CUSHION RUBBER	4
17-04	28-920	チェーン	CHAIN	1
17-05	20-0020	附属部品ケース	ACCESSORIES	1
17-06	80-751	根角ボルト	SCREW	4
17-07	28-464	T型レンチ 10mm	T-WRENCH	1
17-08	28-452	ドライバー (L)	DRIVER (L)	1
17-09	07-707	下マス	LOWER KNIFE	1
17-10	28-011	ピンセット	TWEZERS	1
17-11	28-614	油殺し	OILER	1
17-12	28-615	ジョウゴ	OIL FUNNEL	1
17-13	28-317	グリッパ付六角レンチ 1.5mm	ALLEN KEY (1.5mm)	1
17-14	28-311	六角レンチ 2mm	ALLEN KEY (2mm)	1
17-15	28-312	六角レンチ 2.5mm	ALLEN KEY (2.5mm)	1
17-16	28-313	六角レンチ 3mm	ALLEN KEY (3mm)	1
17-17	28-314	六角レンチ 5mm	ALLEN KEY (5mm)	1
17-18	13-0140-6	針 UYX128GAS#14	NEEDLE UYX128GAS#14	1
17-19	13-0160-6	針 UYX128GAS#16	NEEDLE UYX128GAS#16	1
17-20	13-0110-6	針 UYX128GAS#11	NEEDLE UYX128GAS#11	1
17-21	23-121	テープホルダ付ゴムA	CUSHION RUBBER	4
17-22	23-122	テープホルダ付ゴムB	CUSHION RUBBER	4
17-23	75-535	ワッシャー	WASHER	4

# 18. ゲージパート GAUGE PARTS

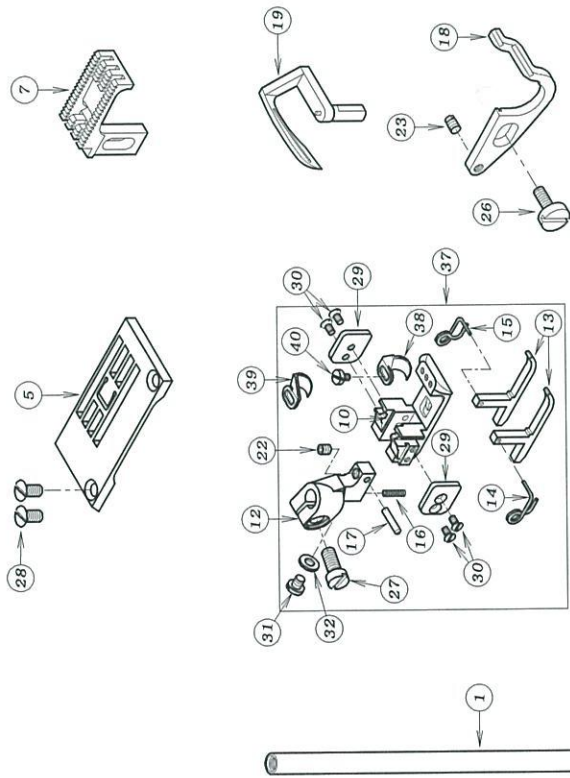
1702B, BK, PBK



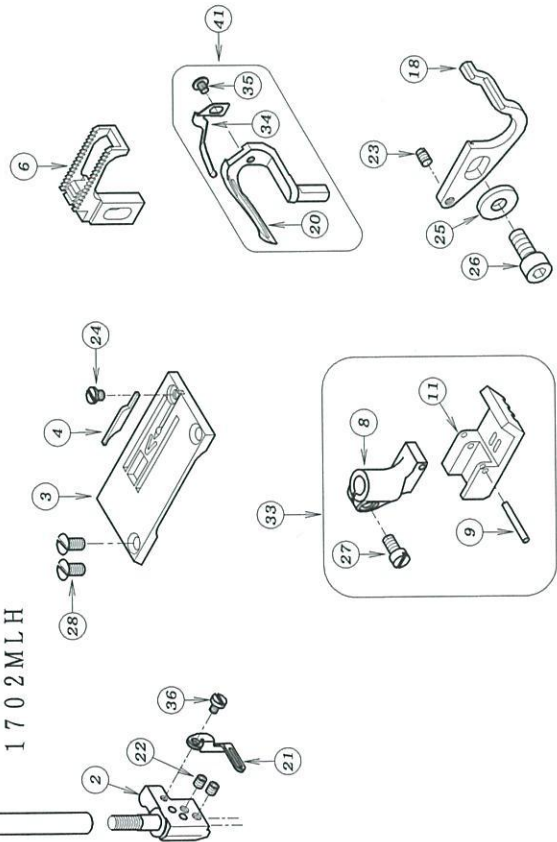
REF. NO.	PART NO.	品名	DESCRIPTION	Q'TY
18-01	07-410	生地カイト*	BELT LOOP GUIDE	2
18-02	11-704	針棒	NEEDLE BAR	1
18-03	*	針株	NEEDLE HOLDER	1
18-04	*	針板	NEEDLE PLATE	1
18-05	15-704	送り歯	FEED DOG	1
18-06	*	押えセット	PRESSER FOOT ASS'Y	1
18-07	*	押え足	BOTTOM	1
18-08	17-8190-A	押え足ホース	SHANK	1
18-09	17-8190-F	ホース	SPRING	1
18-10	17-8190-G	ピン	PIN	1
18-11	18-702	針受け	NEEDLE GUARD	1
18-12	18-705	針受け	NEEDLE GUARD	1
18-13	19-712	ルーパー	LOOPER	1
18-14	45-255	針株カイト*	THREAD GUIDE	1
18-15	45-549	針株糸道	THREAD EYELET	1
18-16	75-455	ワッシャ	WASHER	2
18-17	75-456	ワッシャ	WASHER	1
18-18	84-113	ネジ	SCREW	1
18-19	84-368	ネジ	SCREW	2
18-20	84-464	ネジ	SCREW	1~2
18-21	84-465	ネジ	SCREW	1
18-22	85-618	ネジ	SCREW	2
18-23	87-096	ネジ	SCREW	2
18-24	87-104	ネジ	SCREW	3
18-25	87-113	六角穴付きボルト	BOLT	1
18-26	87-166	ネジ	SCREW	2
18-27	87-252	六角穴付きボルト	BOLT	1
18-28	*	ワッシャ	HOLDER	1
18-29	*	ホルダー	HOLDER	1

# 19. ガージパーツ GAUGE PARTS

1702P, PMD



1702MLH



REF. NO.	PART NO.	品名	DESCRIPTION	Q'TY
19-01	11-704	針棒	NEEDLE BAR	1
19-02	*	針株	NEEDLE CLAMP	1
19-03	*	針板	NEEDLE PLATE	1
19-04	14-7210-A	針板爪	NAIL	1
19-05	*	針板	NEEDLE PLATE	1
19-06	15-321	送り歯	FEED DOG	1
19-07	*	送り歯	FEED DOG	1
19-08	17-4430-A	押えホース	SHANK	1
19-09	17-4430-C	ヒンジネジ	SCREW	1
19-10	*	押え足	BOTTOM	1
19-11	17-7210-B	押え足	BOTTOM	1
19-12	17-7680-A	押えホース	SHANK	1
19-13	17-7680-B	補助押え足	GUIDE BRACKET	2
19-14	17-8190-D	補助押え足ハネ(左)	SPRING (LEFT)	1
19-15	17-8190-E	補助押え足ハネ(右)	SPRING (RIGHT)	1
19-16	17-8190-F	ハネ	SPRING	1
19-17	17-8190-G	ピン	PIN	1
19-18	18-702	針受け	NEEDLE GUARD	1
19-19	19-712	ルーパー	LOOPER	1
19-20	19-363	ルーパー	LOOPER	1
19-21	145-549	針株ネジ	SCREW	3
19-22	187-104	ネジ	SCREW	1
19-23	184-113	ネジ	SCREW	1
19-24	184-163	ネジ	SCREW	1
19-25	175-456	ワッシャー	WASHER	1
19-26	187-252	六角穴付きボルト	BOLT	1
19-27	187-034	ネジ	SCREW	1
19-28	184-464	ネジ	SCREW	2
19-29	17-8190-J	補助押え足ガイドプレート	GUIDE PLATE	2
19-30	187-107	ネジ	SCREW	4
19-31	187-083	ネジ	SCREW	1
19-32	175-228	ワッシャー	WASHER	1
19-33	*	押えセット(MLH)	PRESSER FOOT ASS'Y	1
19-34	179-579	ルーパー	THREAD RETAINING SPRING	1
19-35	185-611	ネジ	SCREW	1
19-36	185-618	ネジ	SCREW	1
19-37	*	押えセット(P, PMD)	PRESSER FOOT ASS'Y	1
19-38	17-7680-K	生地ガイド	GUIDE	1
19-39	17-7680-L	生地ガイド	GUIDE	1
19-40	187-035	ネジ	SCREW	1
19-41	19-3630-2	後ルーパーセット	REAR LOOPER ASS'Y	1

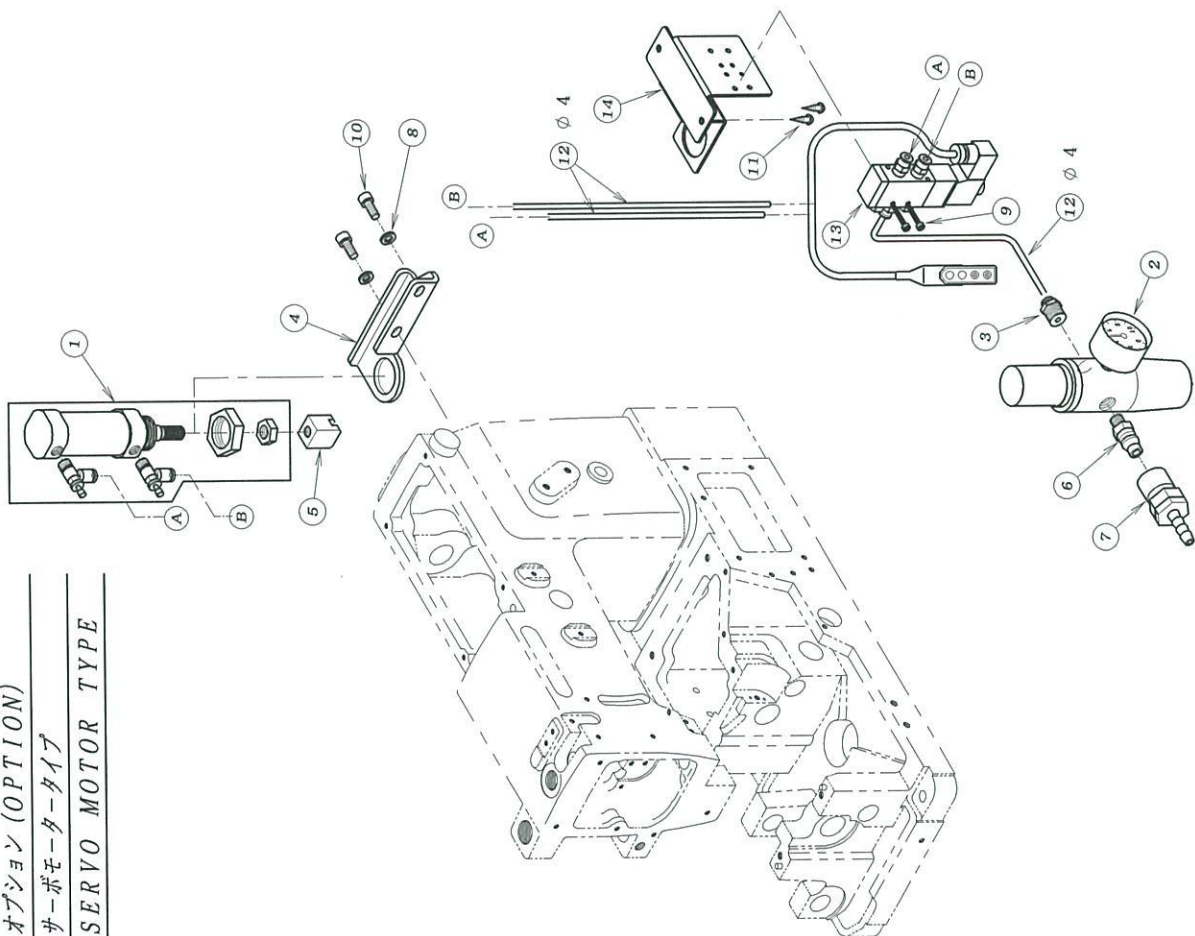
20. 押え揚げ装置 (エア-式) FL-3

FOOT LIFTER MECHANISM (PNEUMATIC TYPE) FL-3

オプション (OPTION)

サーボモータータイプ

SERVO MOTOR TYPE



REF. NO.	PART NO.	品名	DESCRIPTION	Q'TY
20-01	00-6082	押え揚げシリンダーセット	AIR CYLINDER ASS'Y	1
20-02	05-2120-A	フイルタレギュレータ	REGULATOR	1
20-03	05-217	レギュレータ用継手	JOINT	1
20-04	05-596	押え揚げシリンダーブラケット	BRACKET	1
20-05	05-891	押え揚げレバ-作動金具	CHIP	1
20-06	06-516	カプラメス	CONNECTOR	1
20-07	06-517	カプラメス	CONNECTOR	1
20-08	75-552	ワッシャー	WASHER	2
20-09	87-438	六角穴付ボルト	SCREW	2
20-10	87-171	六角穴付ボルト	SCREW	2
20-11	87-902	木ネジ	SCREW	2
20-12	05-979	チューブφ4 x 700mm	TUBE (φ4x700L)	3
20-13	05-982	電磁弁セット	SOLENOID VALVE ASS'Y	1
20-14	05-644	電磁弁取付板	BRACKET	1

21. 押え揚げ装置 (エア-式) FL-6

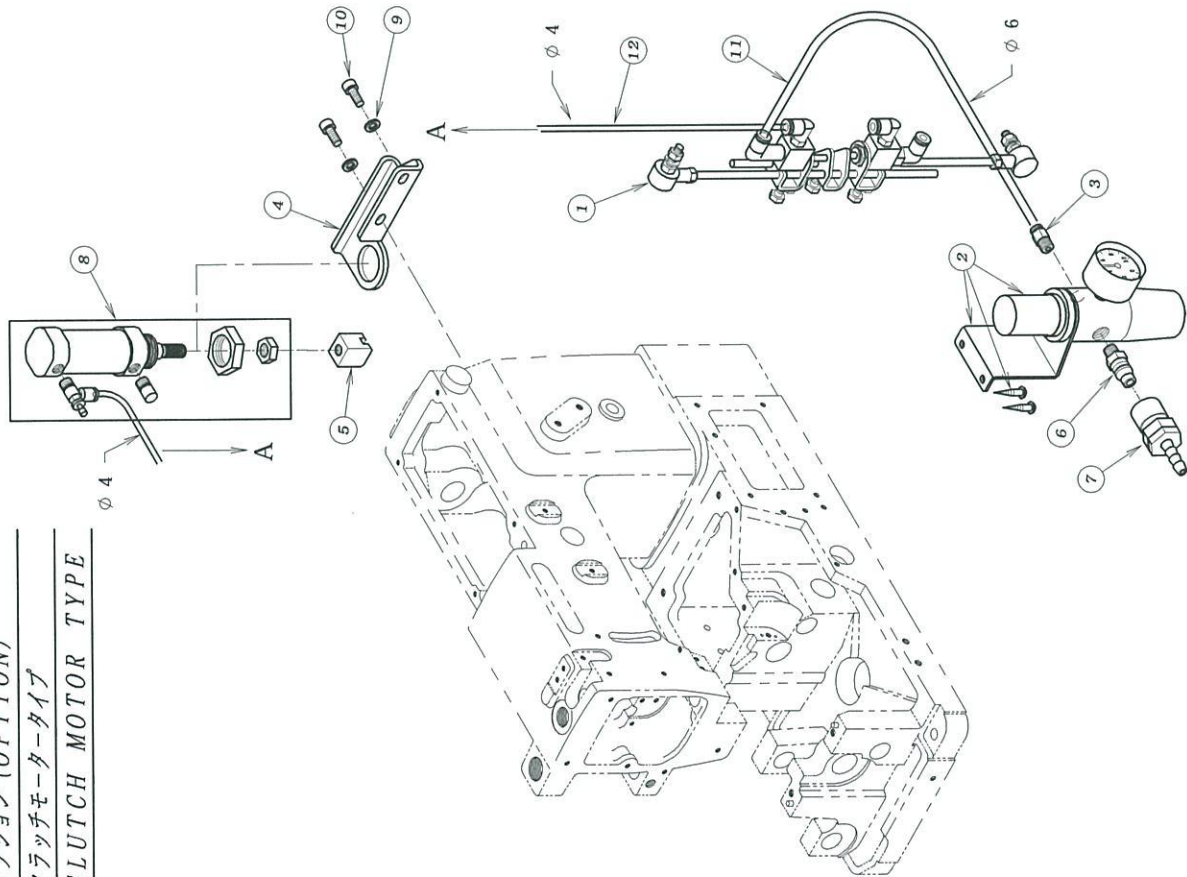
FOOT LIFTER MECHANISM (PNEUMATIC TYPE) FL-6

オプション (OPTION)

クラッチモータータイプ

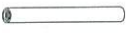

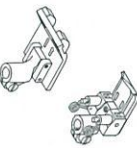





CLUTCH MOTOR TYPE

REF. NO.	PART NO.	品名	DESCRIPTION	Q'TY
21-01	00-8040	吸込み押え揚げ用バルブセット	TREADLE AIR SWITCH ASS'Y	1
21-02	05-212	フィルタレギュレータ	REGULATOR	1
21-03	05-218	レギュレータ-用継手	JOINT	1
21-04	05-596	押え揚げシリンダー-ブラケット	BRACKET	1
21-05	05-891	押え揚げレバ-作動金具	CHIP	1
21-06	06-516	カブラメス	CONNECTOR	1
21-07	06-517	カブラオス	CONNECTOR	1
21-08	00-6130	押え揚げシリンダー-セット	AIR CYLINDER ASS'Y	1
21-09	75-552	ワッシャー	WASHER	2
21-10	87-171	六角穴付ボルト	SCREW	2
21-11	05-486	チューブφ6x1000mm	TUBE (φ6x1000L)	1
21-12	05-979	チューブφ4x700mm	TUBE (φ4x700L)	1





## 22. ゲージ部品一覽表 GAUGE PARTS TABLE

モデル MODEL	ゲージサイズ GAUGE SIZE (インチ) (INCH)	針棒 NEEDLE BAR	針株 NEEDLE HOLDER	押え組 PRESSER FOOT ASSEMBLY	針板 NEEDLE PLATE	送歯 FEED DOG	ルーパー台 LOOPER HOLDER	針受 NEEDLE GUARD	ルーパー LOOPER
1702B	3/16								
	7/32		12-2170-1	17-5640-1	14-743	15-704	18-702	19-712	
	1/4		12-2280-1	17-5650-1	14-753	15-703	18-705		
3/16	12-2290-1	17-5670-1	14-763						
1702BK	7/32	11-704	12-2180-1	17-5640-1	14-743	15-704	19-315	18-702	19-712
	1/4		12-2190-1	17-5650-1	14-753				
	1/8		12-2200-1	17-5670-1	14-763				
1702P 1702PMD	5/32	11-704	12-2150-1	17-0940-1	14-724	15-703	19-315	18-702	19-712
	3/16		12-2160-1	17-0950-1	14-734				
	7/32		12-2170-1	17-0960-1	14-744				
1702MLH	1/4	11-704	12-2280-1	17-0970-1	14-754	15-704	19-315	18-702	19-712
	1/8		12-2290-1	17-0980-1	14-764				
	1/8		12-2150-1	17-7210-1	14-721				







---

# *DVK Series Instruction Manual*

---

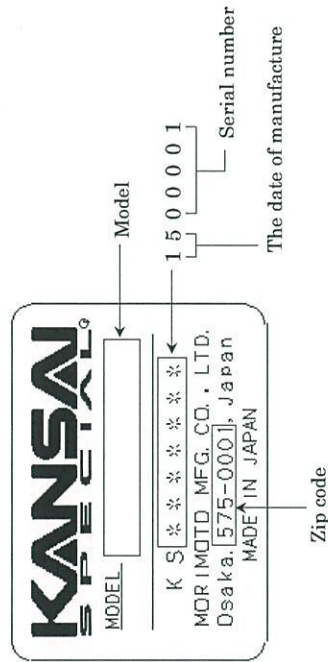
---

## INTRODUCTION

Thank you for your purchasing Kansai Special's DVK Series.  
Read and study this instruction manual carefully before beginning any of the procedures and save it for later use.

1. This instruction manual describes adjustments and maintenance procedures on this machine.
2. Before starting the machine, check to make sure the pulley cover, safety cover, etc. are secured.
3. Before adjusting, cleaning, threading the machine or replacing the needle, be sure to turn off the power.
4. Never start the machine with no oil in the reservoir.
5. Refer to the parts list as well as this instruction manual before performing preventive maintenance.
6. The contents described in this instruction manual are subject to change without notice.

### Indication of serial number



## CONTENTS

1. NEEDLES & THREADING THE MACHINE	1
1-1 Needles	1
1-2 Replacing the needle	1
1-3 Threading the machine	1
2. MACHINE SPEED	2
2-1 Machine speed & direction in which the machine pulley runs	2
2-2 Motor & belt	2
3. LUBRICATION	3
3-1 Oil	3
3-2 Oiling	3
3-3 Replacing the oil and the filter element	3
4. SEWING MACHINE INSTALLATION	4
4-1 Cutting the machine table	4
4-2 Installing the machine	5
5. TIMING OF THE LOOPER TO THE NEEDLES	5
5-1 Angle and height for installing the looper	5
5-2 Looper left-to-right movement	6
5-3 Looper setting distance	6
5-4 Needle height	6
5-5 Needle/looper front-to-back relationship	7
6. ADJUSTING THE NEEDLE GUARDS	7
6-1 Position of the needle guard (rear)	7
6-2 Position of the needle guard (front)	8
7. ADJUSTING THE FEED DOG & STITCH LENGTH	8
7-1 Feed dog height & tilt	8
7-2 Stitch length	8
8. ADJUSTING THE PRESSER FOOT	9
8-1 Presser foot pressure	9
8-2 Position of the presser foot & foot lift	9
9. ADJUSTING THE STITCH FORMATION	10
9-1 Position of the thread support	10
9-2 Position of the looper thread eyelets	10
9-3 Position of the looper thread take-up	10

10. ADJUSTING THE REAR PULLER DEVICE	11
10-1 Manual lever	11
10-2 To adjust the puller pressure	11
10-3 Adjusting the feeding amount of the rear puller	11
11. ADJUSTING THE FRONT PULLER DEVICE	11
11-1 To insert elastic and adjust the feeding amount of the front puller	11
12. ADJUSTING THE AUXILIARY FEEDING DEVICE	12
12-1 Auxiliary feed dog height & tilt	12
12-2 Installing the auxiliary presser foot	12
13. ADJUSTING THE BK FRONT KNIFE DEVICE	13
13-1 Adjusting the clearance between the left and right knives	13
13-2 Disassembling/reassembling the lower knives	13
13-3 Disassembling/reassembling the upper knives	14
13-4 Overlap of the upper and lower knives	14
13-5 Resharpening the lower knives	14
14. CLEANING THE MACHINE	14

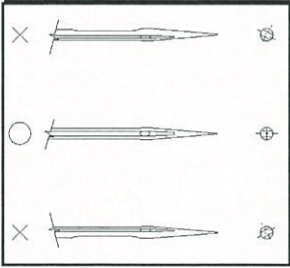
## [1] NEEDLES & THREADING THE MACHINE

### 1-1 Needles

UY128GAS of Schmetz or Organ

Select the proper needle for the fabric and thread.

< Needles and needle size >		Except 1701, 1702BHD	
Schmetz	Nm75	Nm80	Nm90
Organ	#11	#12	#14
			#16
			#18



### 1-2 Replacing the needle

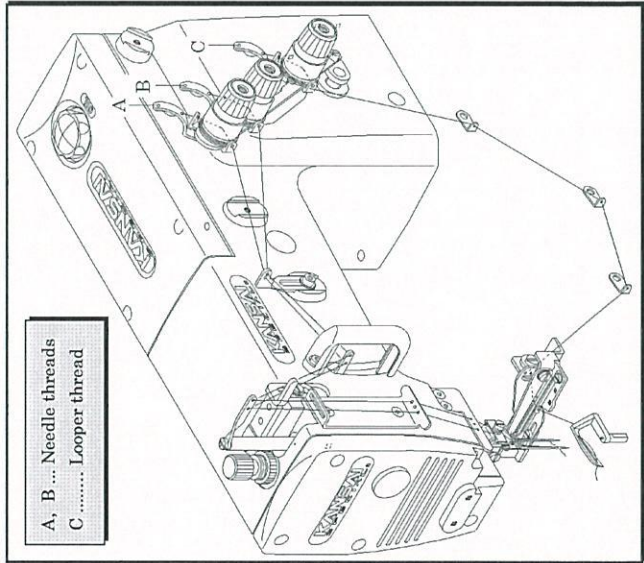
When replace the needle, check the needle carefully to see that the scarf is turned to the rear of the machine (see the illustration). Then install the needle correctly.

< Note >

*Before replacing the needle, be sure to turn off the machine.  
A clutch motor continues running for a while after the machine is turned off.  
Therefore keep on pressing the pedal until the machine stops.*

### 1-3 Threading the machine

Thread the machine correctly by referring to the illustration below.  
Threading the machine incorrectly may cause skip stitching, thread breakage and/or uneven stitch formation.



1

DVKseries

## [2] MACHINE SPEED

### 2-1 Machine speed & direction in which the machine pulley runs

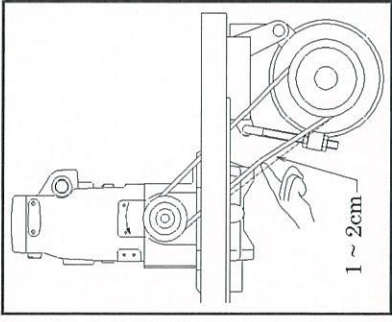
Refer to the table below for maximum and standard speeds of the Series. To extend machine life, run the machine approximately 15-20% below the maximum speed for the first 200 hours of operation (approx. 1 month). Then run the machine at the standard speed. The machine pulley turns counterclockwise as seen from the end of the machine pulley.

### 2-2 Motor & belt

Motor : 3-phase, 2-pole, 400W clutch motor

Belt : M type V belt

Select the proper motor pulley according to the machine speed (refer to the motor pulley outer diameter on the table below). Adjust where to position the motor by pressing the finger onto the middle of the belt so that 1-2cm deflection can be obtained (see the illustration on the right).



< Machine speed >

Type	Maximum speed	Standard speed
P, PMD, B	4500SPM	4000SPM
BK, MLH	4000SPM	3500SPM

< Motor pulley selection table >

Motor pulley outer diameter (mm)	Machine speed (SPM)	
	50Hz	60Hz
70	2900	3450
80	3300	3900
90	3700	4400
100	4100	(4900)
110	4500	

2

DVKseries

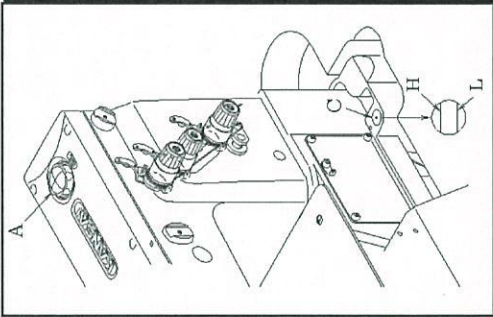
### [13] LUBRICATION

#### 3-1 Oil

Use Kansai Special's genuine oil.  
(Part No. 28-611)

#### 3-2 Oiling

- To fill the machine with oil  
Remove oil plug A from the oil hole.  
Fill the machine with oil until the oil level is at the top line (see H in the illustration) on oil gauge C.  
After the first lubrication, add oil so that the oil level will be between H and L.
- To check for proper oil flow  
After filling the machine with oil, run the machine to check the oil is splashing from oil pipe outlet B.

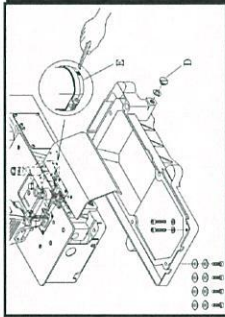


#### 3-3 Replacing the oil and the filter element

To extend machine life, be sure to replace the oil after the first 250 hours of operation.

To replace the oil, follow the procedures below.

1. Remove the V belt from the motor pulley and then remove the machine from the table.
2. Remove screw D and then drain the oil.  
Be careful not to stain V belt with the oil.
3. After draining the oil, be sure to tighten screw D.
4. Fill the machine with oil by referring to 3-2 shown above.



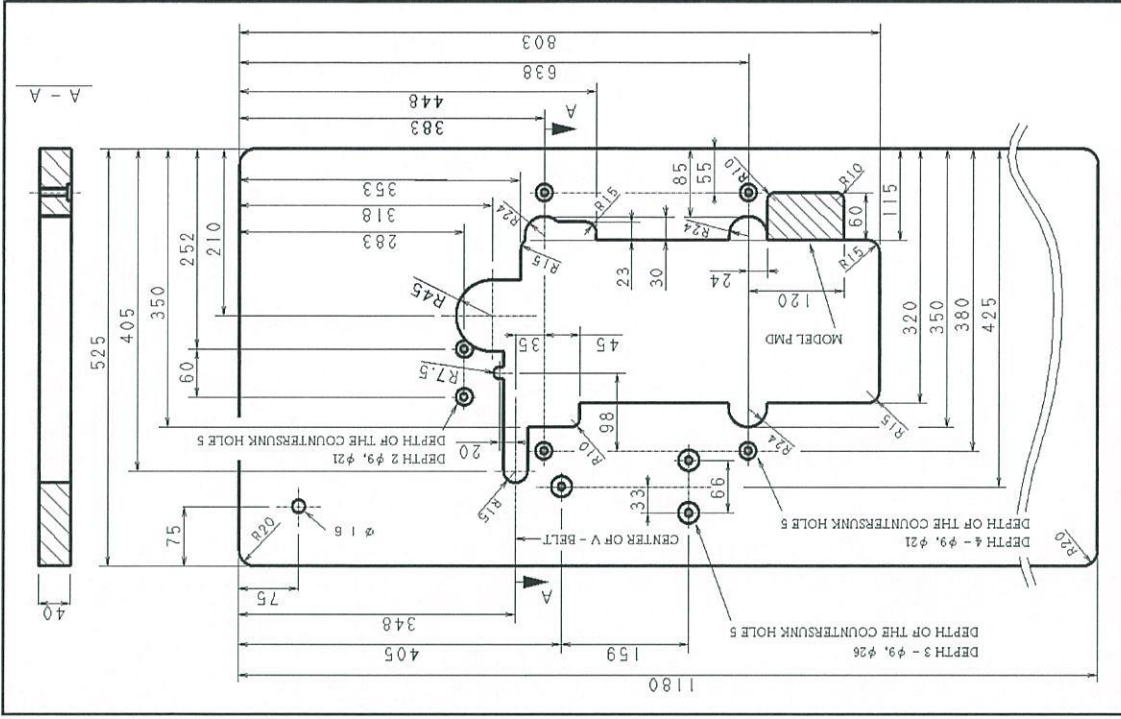
If filter element E is contaminated, proper oiling may not be performed.

Clean the filter element every six months. If just a little or no oil flows out from the nozzle with the proper amount of oil in the machine, check the filter element.

To clean the filter element, remove oil reservoir.

### [14] SEWING MACHINE INSTALLATION

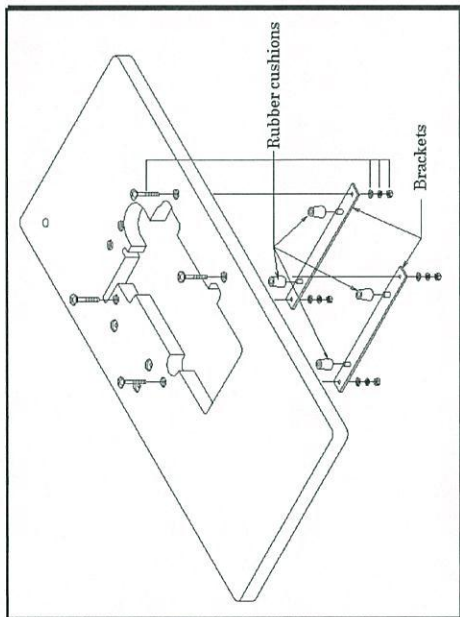
#### 4-1 Cutting the machine table





#### 4-2 Installing the machine

Install the brackets on the underside of the table board (see the illustration below).  
Fit the rubber cushions onto the brackets.  
Mount the machine head on the rubber cushions.

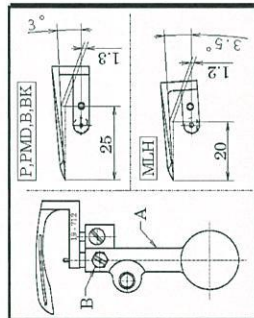


### [5] TIMING OF THE LOOPER TO THE NEEDLES

#### 5-1 Angle and height for installing the looper

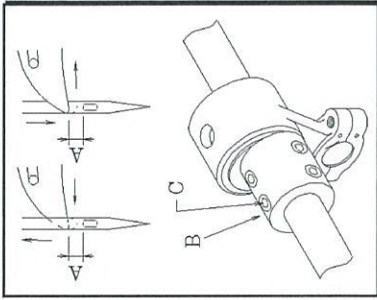
To obtain the proper angle and height, insert the looper fully into looper holder A and then tighten screw B. The proper angle for the looper on P, PMD, B, BK is 3°. Distance at 25mm from the point of the looper between the bottom of the looper blade and the extension line from the point of the looper: Approximately 1.3mm.

The proper angle for the looper on MLH is 3.5°. Distance at 20mm from the point of the looper between the bottom of the looper blade and the extension line from the point of the looper: Approximately 1.2mm.



#### 5-2 Looper left-to-right movement

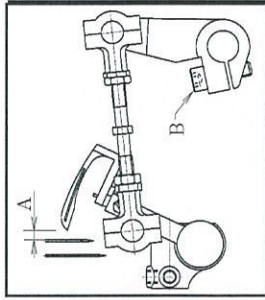
When the point of the looper moves from the right/left to the left/right, distance A from the top of the left needle's eye to the point of the looper at the left side of the left needle should be equal (see the illustration on the right). To make this adjustment, remove the machine cover, loosen three screws C on looper eccentric B and then shift looper eccentric B by turning the machine pulley while holding looper eccentric B.



#### 5-3 Looper setting distance

When the looper is at the extreme right end of its travel, adjust distance A from the point of the looper to the right side of the right needle. This distance varies by model and/or gauge size (see the table below). Adjustment is made by loosening screw B.

Model (gauge size)	Setting distance A (mm)
P, PMD, MLH (1/8, 5/32)	5.2
P, PMD, (3/16, 7/32, 1/4)	4.4
B, BK, PBK	4.0



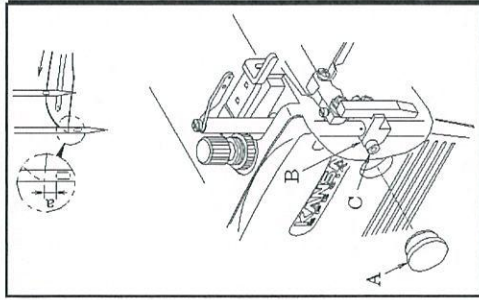
#### 5-4 Needle height

When the point of the looper has reached the left side of the left needle with the machine pulley turned in the operating direction, adjust distance A from the top of the left needle's eye to the point of the looper on the back side of the needle. This distance varies by model and/or gauge size (see the table below). The adjustment is that raise needle bar up or down by remove rubber caps A and loosen the screw C.

< Note >

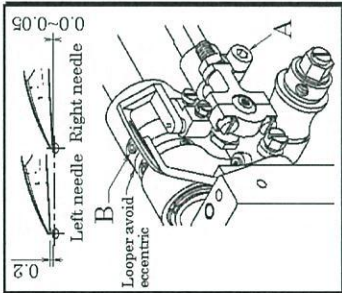
After the above adjustment is made, install the needle plate and then check to make sure each needle drops correctly into the center of the each needle drop hole.

Model	A (mm)
P, PMD, MLH	1.2~1.5
B, BK, PBK	0~0.5



### 6-5 Needle/looper front-to-back relationship

When the looper passes on the back side of the needle, the clearance between the right needle and the looper should be 0~0.05mm. Adjustment is made by loosening screw A. The clearance between the left needle and the looper should be 0.2mm. Adjustment is made by loosening screw B on the looper avoid eccentric. To increase the clearance, turn the looper avoid eccentric toward the back side of the machine. To decrease the clearance, turn the looper avoid eccentric toward the front side of the machine.



## [6] ADJUSTING THE NEEDLE GUARDS

### 6-1 Position of the needle guard (rear)

#### ■ Movable type (for models except BK, PBK)

When the point of the looper has reached the center of the right needle, the distance from the point of the right needle to line (a) on needle guard A should be 1mm.

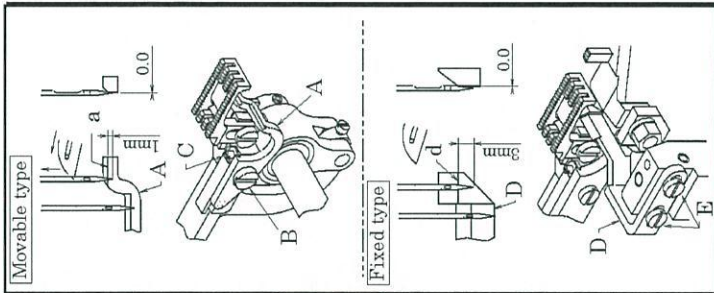
Then the clearance between the needle and the needle guard should be 0mm. Adjustment is made by loosening screw B and turning screw C to move the needle guard up or down and/or front or back as required.

<Note>

Since the needle guard is installed on the feed dog bracket, the relationship between the needle and the needle guard varies according to the stitch length. Therefore readjust the needle guard if the stitch length is changed.

#### ■ Fixed type (for BK, PBK)

When the needle bar is at the bottom of its stroke, the distance from the point of the right needle to line (d) on needle guard D should be approximately 3mm. Then the clearance between the needle and the needle guard should be 0mm. Adjustment is made by loosening screws E.



### 6-2 Position of the needle guard (front)

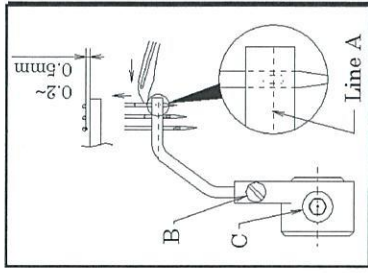
When the point of the looper has reached the center of the right needle, the center of the right needle's eye should be aligned with line A on the needle guard (front).

In addition, the left and right needles should be parallel with the needle guard (front).

Adjustment is made by loosening screw B.

The clearance between the needles and the needle guard (front) should be 0.2~0.5mm.

Adjustment is made by loosening screw C.



## [7] ADJUSTING THE FEED DOG & STITCH LENGTH

### 7-1 Feed dog height & tilt

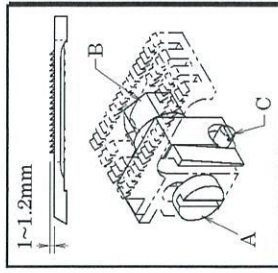
#### ■ Height adjustment

The feed dog is at the top of its stroke, the feed dog teeth should be 1.0~1.2mm above the top surface of the needle plate.

Adjustment is made by loosening screw A.

#### ■ Tilt adjustment

When the feed dog is at the top of its stroke, the feed dog teeth should be parallel with the top surface of the needle plate. Adjustment is made by loosening screw B and turning screw C.



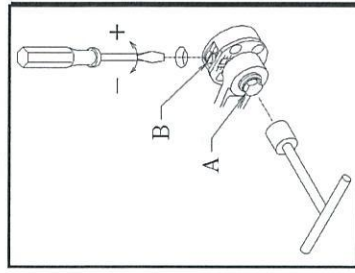
### 7-2 Stitch length

Loosen bolt A (left-hand thread) with a 9.5mm T-wrench. Then turn screw B. To increase the stitch length, turn screw B counterclockwise.

To decrease the stitch length, turn screw B clockwise.

<Note >

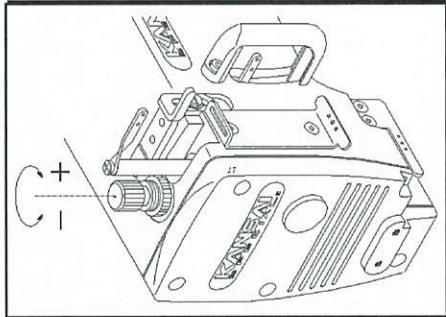
Since the needle guard is installed on the feed dog bracket, the relationship between the needle and the needle guard varies according to the stitch length. Therefore readjust the needle guard if the stitch length is changed.



## [18] ADJUSTING THE PRESSER FOOT

### 8-1 Presser foot pressure

The presser foot pressure should be as light as possible, yet be sufficient to feed the fabric and produce uniform stitches.  
To increase the presser foot pressure, turn the adjusting knob clockwise.

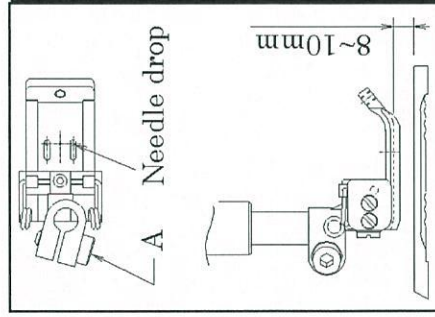


### 8-2 Position of the presser foot & foot lift

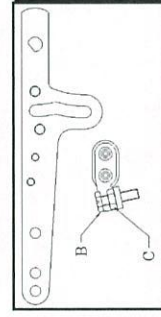
Fit the presser foot onto the presser bar so that the needle can drop correctly to the center of the presser foot needle drop hole.

■ Position of the presser foot  
Loosen screw A. Adjust by moving the presser foot left or right while checking to make sure the needle drops correctly to the center of the presser foot needle drop hole.

■ Foot lift  
The presser foot should be 8~10mm above the top surface of the needle plate.



Set stopper B at the required position.  
Fasten the presser foot lift lever with nut C so that the lever cannot be lowered.

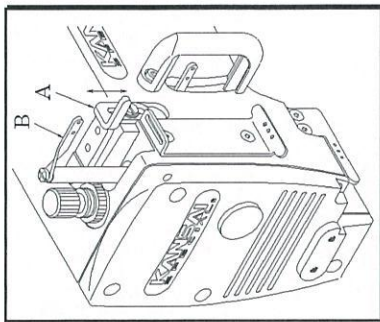


## [19] ADJUSTING THE STITCH FORMATION

### 9-1 Position of the thread support

When the needle bar is at the bottom of its stroke, the centers of the eyes on thread eyelet A should be level with the top surface of thread support B, and A should be parallel with B.

Height adjustment of thread support B is made by loosening screw C and moving thread support B up or down. Moving thread support B up tightens the needle thread. Moving thread support B down loosens the needle thread.



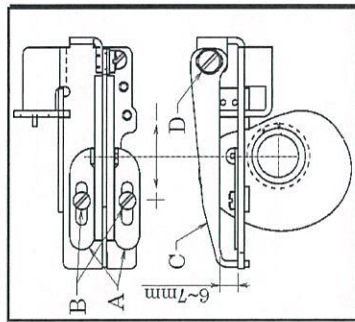
### 9-2 Position of the looper thread eyelets

Align the eyes on looper thread eyelets A with the center of the shaft. Adjust the position of the eyes on looper thread eyelets A by loosening screws B according to the sewing conditions such as the fabric and/or thread to be used.

To increase the amount of the looper thread to be supplied, move looper thread eyelets A toward the rear side of the machine.

To decrease the amount of the looper thread to be supplied, move looper thread eyelets A toward the front side of the machine.

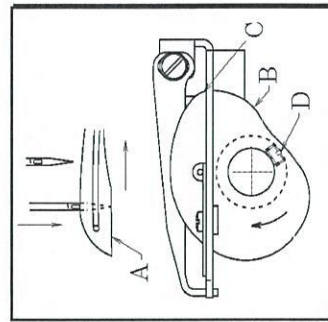
Thread guide C should be 6~7mm above the top surface of the guide plate.  
Adjustment is made by loosening screw D.



### 9-3 Position of the looper thread take-up

When the point of the needle has reached bottom surface A of the looper blade while the looper is moving to the right from the extreme left end of its travel, the looper thread should be removed from point C on looper thread take-up B.

Adjustment is made by loosening and then tightening screw D.



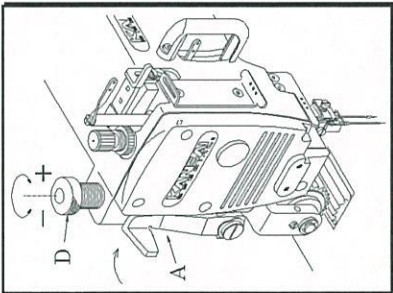
**[10] ADJUSTING THE REAR PULLER DEVICE**

**10-1 Manual lever**

To position or remove the fabric, raise manual lever A.

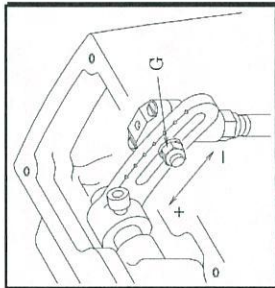
**10-2 To adjust the puller pressure**

The puller pressure should be as light as possible, yet be sufficient to feed the fabric smoothly.  
To increase the pressure, turn adjusting knob D clockwise. To decrease the pressure, turn adjusting knob D counterclockwise.



**10-3 Adjusting the feeding amount of the rear puller**

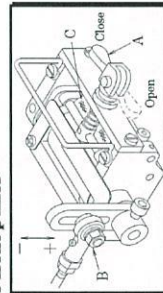
Adjust the feeding amount of the rear puller according to that of the feed dog.  
To increase the amount, loosen nut G and move it to the left. To decrease the amount, move it to the right.



**[11] ADJUSTING THE FRONT PULLER DEVICE**

**11-1 To insert elastic and adjust the feeding amount of the front puller**

Insert elastic by opening/closing small roller C with lever A (see the illustration).  
Adjust the feeding amount of the front puller according to that of the feed dog.  
To decrease the amount, loosen screw B and move it up. To increase the move it down.



**[12] ADJUSTING THE BK AUXILIARY FEEDING DEVICE**

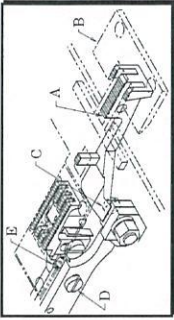
**12-1 Auxiliary feed dog height & tilt**

**■ Height adjustment**

When auxiliary feed dog A is at the top of its stroke, the auxiliary feed dog teeth should be 1.5mm above the top surface of auxiliary feed dog plate B. Adjustment is made by loosening screw C.

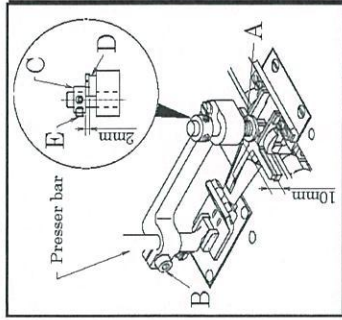
**■ Tilt adjustment**

When auxiliary feed dog A is at the top of its stroke, auxiliary feed dog A should be parallel with auxiliary feed dog plate B. Adjustment is made by loosening screw D and turning screw E.



**12-2 Installing the auxiliary presser foot**

Install the auxiliary presser foot on the presser bar with spring A pressed down to approximately 10mm. Then tighten screw B.  
Position collar C so that there is a clearance of 2mm between collar C and guide plate D. Then tighten screw E.



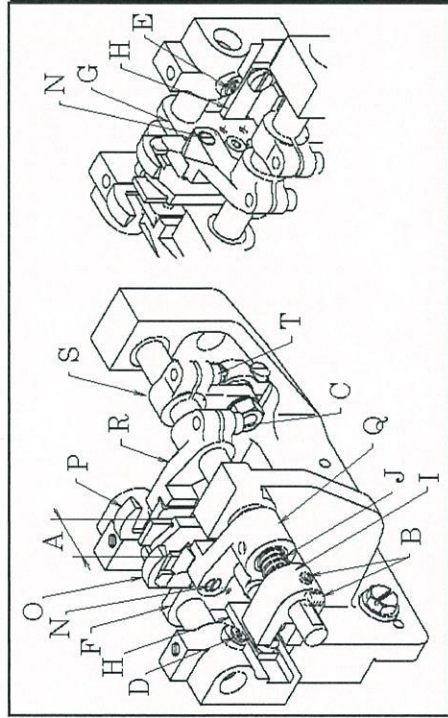
**[13] ADJUSTING THE BK FRONT KNIFE DEVICE**

**13-1 Adjusting the clearance between the left and right knives**

Clearance A should be divided into half by the center line of the needle bar.

■To make the above adjustment

1. Loosen the upper (left and right) knives by loosening screws B and C.
2. To adjust the clearance between the lower left and right knives, loosen screws D and E.
3. Fit lower knife (left and right) holders F and G onto guide plates H. Then tighten screws D and E.
4. Fit upper knife (right) P onto the lower knife (right). Then tighten screw C.
5. Fit upper knife (left) O onto the lower knife (left). Move upper joint bracket I to the right to press spring J. Then tighten screws B while pressing them to the flat spot.



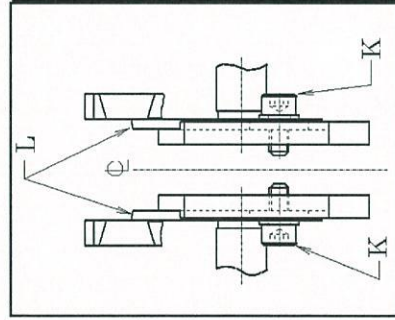
**13-2 Disassembling/reassembling the lower knives**

■To disassemble the lower knives

1. Loosen screws B. Move upper knife joint bracket I to the left so that the spring can be released.
2. Remove the lower knives by removing screws K.

■To reassemble the lower knives

1. Install lower knives L on knife holder F or G with the point of each cutting edge turned outside.
2. Adjust lower knives L so that each cutting edge of lower knives L is flush with the top surface of auxiliary feed dog plate. Then tighten screws K.
3. Move upper joint bracket I to the right to press spring J. Then tighten screws B while pressing them to the flat spot.



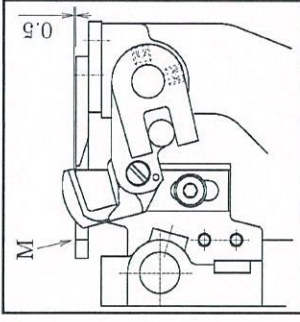
**13-3 Disassembling/reassembling the upper knives**

■To disassemble the upper knives

1. Loosen screws B. Move upper knife joint bracket I to the left so that the spring can be released.
2. Loosen screws N. Remove upper knives O and P by moving them up.

■To reassemble the upper knives

1. Insert the upper knives to the proper depth along the guides on upper knife brackets Q and R. Then tighten screws N.
2. Move upper joint bracket I to the right to press spring J. Then tighten screws B while pressing them to the flat spot.



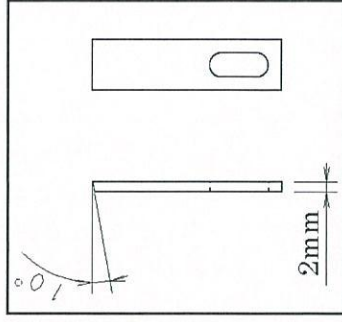
**13-4 Overlap of the upper and lower knives**

When upper knives O and P are at the bottom of their stroke, there should be a clearance of 0.5mm between the points of the cutting edges of the upper knives and those of the lower knives.

Adjustment is made by loosening screw T on upper knife drive lever S.

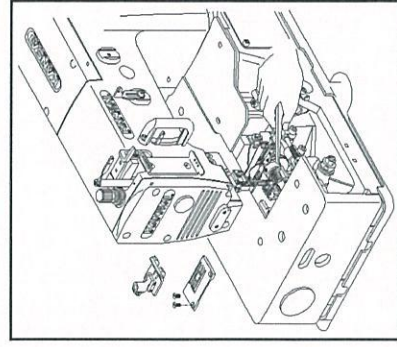
**13-5 Resharpener the lower knives**

Resharpener the lower knives when they become dull. It is recommended spare upper and lower knives are always kept for replacement.



**[14] CLEANING THE MACHINE**

At the end of each day, remove the presser foot and the needle plate and then clean the slots of the needle plate and the area around the feed dogs.



---

**株式会社 森本製作所**

本社 〒575-0001 大阪府四条畷市砂 一丁目 4 番 17 号 TEL : 072-877-1221 FAX : 072-878-9649

**MORIMOTO MFG. CO., LTD.**

1-4-17, SUNA, SHIJONAWATE-CITY, OSAKA 575-0001, JAPAN  
TEL: +81-72-877-1221 FAX: +81-72-878-9649 E-MAIL: sales@kansai-special.com URL: www.kansai-special.com

**FOREIGN AFFILIATED COMPANIES**

**KANSAI SPECIAL AMERICAN MACHINE CORP.**

1 MADISON ST. BLDG. F, EAST RUTHERFORD, N.J. 07073 U.S.A.  
TEL: +1-973-470-8321 FAX: +1-973-470-8497

**KANSAI SPECIAL EUROPE GMBH**

QUIRINSTR. 19, 40545 DUSSELDORF, GERMANY  
TEL: +49-211-577-9090 FAX: +49-211-558-1477 E-MAIL: contact@kansai-special.de

**MORIMOTO SINGAPORE PTE LTD.**

NO.51 PENJURU ROAD #02-02 SINGAPORE 609143  
TEL: +65-6334-1305 FAX: +65-6334-1365 E-MAIL: info@kansaispecial.com.sg

**MORIMOTO INDIA LIAISON OFFICE**

NO.11 SENTHILL NAGAR, PERRIYAR COLONY, AVINASHI ROAD, TIRUPUR, INDIA 641601  
TEL: +91-421-4248229 FAX: +91-421-4286600 Tech Support TEL: +91-770-8300100  
E-MAIL: india@kansaispecial.com.sg

**MORIMOTO BANGLADESH LIAISON OFFICE**

FLAT #2/B.HOUSE #16, ROAD#13, SECTOR#04 UTTARA, DHAKA-1230 BANGLADESH  
TEL: +88-02-8931702 FAX: +88-02-8931704 E-MAIL: bangladesh@kansaispecial.com.sg

**KANSAI (SHANG HAI) INDUSTRIAL SEWING MACHINE CO., LTD**

NO.55 LANE835, JIAXIN ROAD, MALU TOWN, JIADING DISTRICT, SHANGHAI 201818, CHINA  
TEL: +86-21-5990-1798 FAX: +86-21-5990-1538 E-MAIL: kansaish@spe.sina.net

---